

TEXAS



THE FUTURE IS HERE

OUR STUDENTS ARE READY TODAY FOR TOMORROW

AGRICULTURAL EDUCATION

Through agricultural education, students encounter extensive opportunities for leadership development, personal growth, and career skill development. Instruction is delivered through three major components: classroom/laboratory instruction (contextual/inquiry based learning), supervised agricultural experience programs (work-based learning) and student leadership organizations (National FFA Organization, etc.).

CLASSROOM/ LABORATORY INSTRUCTION

AG EDUCATION

SUPERVISED AGRICULTURAL EXPERIENCES

FFA



SUPERVISED AGRICULTURAL EXPERIENCES (SAE)

CONTEXTUAL, INQUIRY-
BASED INSTRUCTION AND
LEARNING THROUGH AN
INTERACTIVE
CLASSROOM AND
LABORATORY.



FFA

PREMIER LEADERSHIP,
PERSONAL GROWTH,
AND CAREER SUCCESS
THROUGH ENGAGEMENT
IN FFA PROGRAM AND
ACTIVITIES.



CLASSROOM/LABORATORY INSTRUCTION

EXPERIENTIAL, SERVICE
AND/OR WORK-BASED
LEARNING THROUGH THE
IMPLEMENTATION
OF SAEs.

TEXAS FFA: TRAINING THE LEADERS OF TOMORROW

RESPECT. RESPONSIBILITY. RESILIENCE. CONFIDENCE.

Today, agriculture connects science, technology, design, and feeding growing populations, but the FFA's core values of respect, responsibility, and resilience remain the same. People think of agriculture as farming and ranching, but the FFA uses the intrinsic values of helping living things grow and thrive to train tomorrow's leaders. The FFA is where advanced classroom concepts come to life in the real world. Founded in 1929, the FFA's mission was to offer greater opportunity for self-expression, leadership development, and a sense of pride in one's work. By teaching students how to creatively solve real world problems with modern science and technology, the FFA is training the leaders of tomorrow.

TEXAS FFA MARKETPLACE SNAPSHOT

- 📍 278,000 high school students are enrolled in agricultural science education courses in Texas
- 📍 177,000 students are Texas FFA members
- 📍 1,095 local FFA chapters
- 📍 2,600 Agricultural Education Teachers (2,500 members of the Agriculture Teachers Association)
- 📍 Hosts the largest youth led convention in Texas

SOCIAL REACH

- 📍 61,300 Facebook fans
- 📍 13,300 Twitter followers
- 📍 38,300 Instagram followers
- 📍 MyTexasFFA.org resource for promotion

"THE TEXAS FFA IS LEADERSHIP IN ACTION. FOR MORE THAN EIGHT DECADES, THE STUDENTS, TEACHERS AND FORMER MEMBERS OF TEXAS AGRICULTURAL EDUCATION / FFA HAVE MADE A POSITIVE DIFFERENCE. FROM THEIR WORK IN LOCAL COMMUNITIES, HEROISM IN OUR MILITARY, LEADERSHIP IN CORPORATE AMERICA, AND SERVICE IN ELECTED OFFICE - WE CAN ALL BE PROUD OF OUR TEXAS FFA. I AM HONORED TO BE INVOLVED."

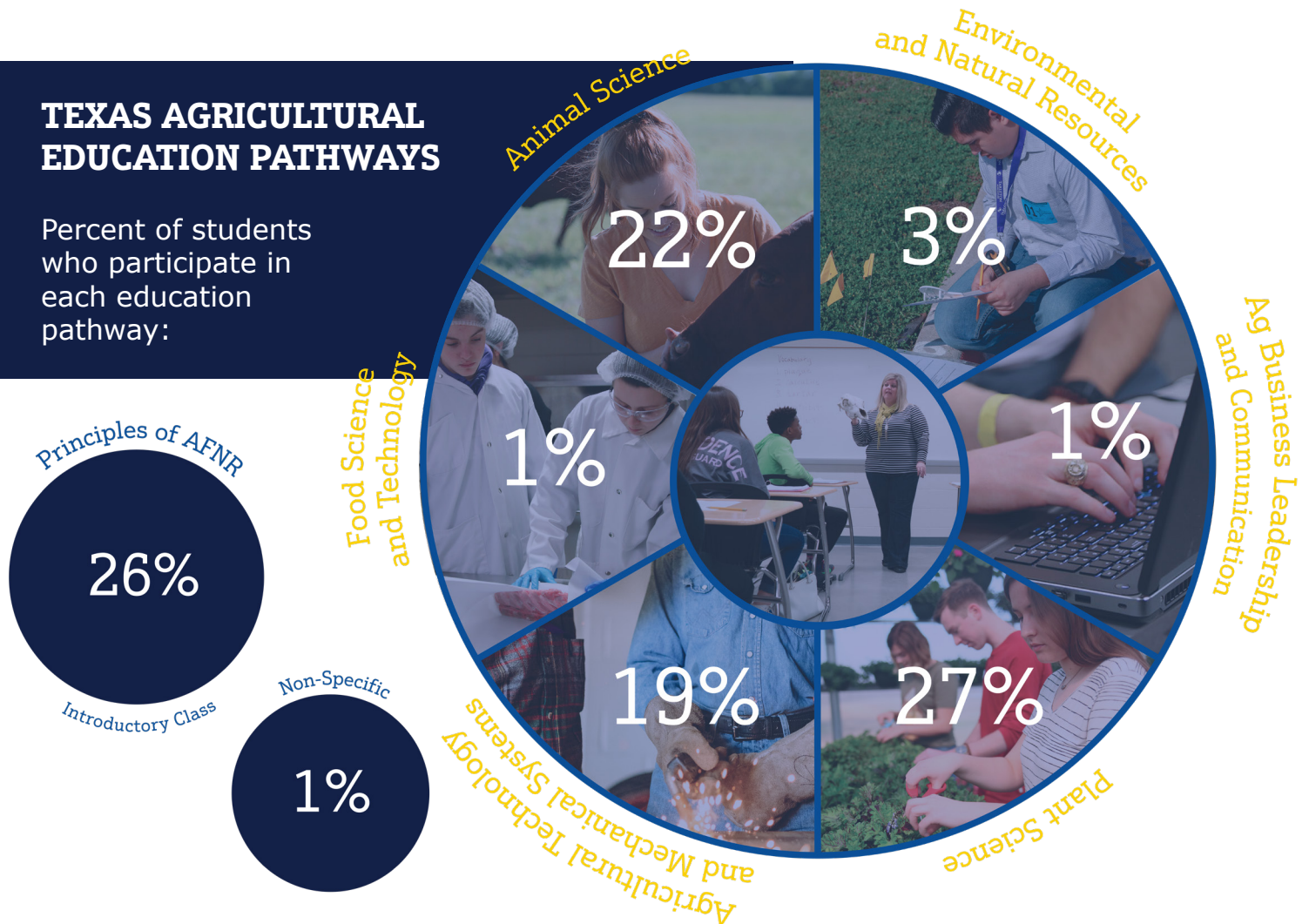
- MITCHELL DALE, OWNER - MCREE FORD, TEXAS FORD DEALER

WHAT DO TEXAS AGRICULTURAL EDUCATION PROGRAMS TEACH?

OVER 2,600 AGRICULTURAL EDUCATORS TEACH THE AGRICULTURE, FOOD, AND NATURAL RESOURCES CAREER CLUSTER STANDARDS COVERING MORE THAN 50 COURSES AND LABS STATE SO THAT MORE THAN 265,000 STUDENTS CAN GAIN AN IN-DEPTH UNDERSTANDING OF THE DIFFERENT SECTORS OF THE AGRICULTURE INDUSTRY.

TEXAS AGRICULTURAL EDUCATION PATHWAYS

Percent of students who participate in each education pathway:



UNIVERSITY LEADERS SAY TEXAS FFA STUDENTS ARE:

- 📍 1.5 times more prepared than their peers
- 📍 1.6 times more valuable than athletic students when recruiting
- 📍 1.13 times more valuable than National Honor Society students when recruiting



TEXAS FFA ASSOCIATION

WHO WE ARE

Texas FFA has evolved from an organization focusing primarily on production agriculture, to a broader-based organization that addresses the needs and interests of students. FFA gives students the opportunity to apply practical classroom knowledge to real world experiences through ongoing enrichment opportunities, as well as local, state, and national competitions.

Today, the Texas FFA is the nation's largest state FFA association with more than 177,000 members. The organization continues to help the next generation rise to meet challenges by helping members develop their own unique talents and explore their interests in a broad range of career pathways.

STUDENT LEADERSHIP

The Texas FFA is an organization of, by, and for students. The Association operates programs that support the work of local chapters, including competitive events, scholarship programs, student leadership operations, and the annual state convention. Members elect their own officers and plan and conduct activities with direction from their chapter's advisors. State officers are elected each year by the student delegates at the Texas FFA Convention. During their year of service representing the Texas FFA, the state FFA president and first vice president visit more than 400 schools and travel more than 60,000 miles.

CAREER PREPARATION

Modern agriculture is about much more than farming, and so are we. FFA activities include hands-on work experiences and life skill development that help members discover their ideal career path.

THROUGH 29 CAREER DEVELOPMENT
EVENTS AND 51 NATIONAL PROFICIENCY
AREAS, MEMBERS ARE CHALLENGED
TO REAL-LIFE, HANDS-ON TESTS OF
**SKILLS THAT PREPARE THEM FOR
THE 22.1 MILLION JOBS FOUND IN THE
AGRICULTURAL AND FOOD SECTORS.***

*USDA, Economic Research Service Using Data from U.S. Department of Commerce, Bureau of Economic Analysis, as of September 29, 2023

THE **TEXAS FFA EXPERIENCE** CREATES THE NEXT GENERATION OF LEADERS





AGRICULTURE
TEACHERS
ASSOCIATION OF TEXAS

AGRICULTURE TEACHERS ASSOCIATION OF TEXAS

SUCCESS IN LIFE STARTS WITH MENTORSHIP

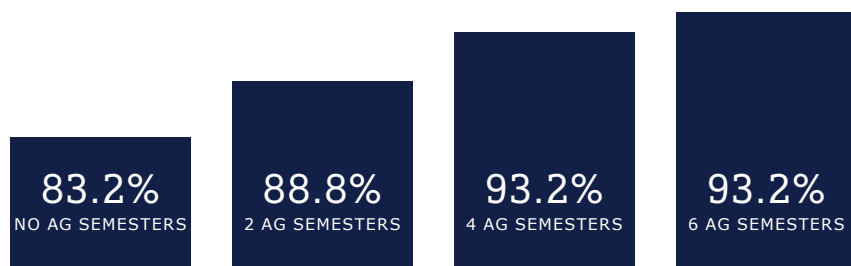
In Texas, hard-working agriculture, food and natural resources teachers are empowering students through the gifts of knowledge, drive, and confidence. Thanks to their dedication, the future of Texas students has never been brighter.

The Agriculture Teachers Association of Texas was established to promote and advance agriculture education in Texas and provide legislative representation to safeguard agriculture education programs.

The association informs agriculture teachers about the latest agricultural education practices, encourages higher standards of teaching, and provides a unified voice in the state legislature.

RESEARCH SHOWS:

Students with **2, 4 or 6** semesters of agricultural education graduate at a higher rate than their high school peers.



MEMBERSHIP
IN **CAREER AND
TECHNICAL STUDENT
ORGANIZATIONS**, SUCH
AS FFA, IS EXTREMELY
IMPORTANT FOR
PREPARING STUDENTS
FOR COLLEGE AND
HELPING THEM RECEIVE
SCHOLARSHIPS.

TO BE GREAT, YOU NEED SOMEONE WHO MAKES YOU BETTER.



TEXAS FFA FOUNDATION

OUR STUDENTS, OUR FUTURE

Over the past 30 years the Texas FFA Foundation has grown, as has its impact to strengthen agricultural science education and the Texas FFA. We proudly help each student develop their potential for growth, career success and leadership in a global marketplace.

Collaboration, consistency, and hard work will contribute to the long-term sustainability and success of agricultural education and the Texas FFA program.

SCOPE OF ENDOWMENT

The Texas FFA Foundation has an academic scholarship endowment to ensure students can receive these scholarships in perpetuity. Through a competitive scholarship selection process, academic scholarships are awarded annually at the State FFA Convention to deserving Texas FFA members.

APPROXIMATELY \$2.4 MILLION
A YEAR IN ACADEMIC AND AWARD
SCHOLARSHIPS.

Our organizations partner with scholarship sponsors to provide financial assistance for deserving Texas FFA students. Scholarships range from \$2,000 - \$20,000.

PROFESSIONAL NETWORKS

A sponsorship with the Texas FFA Foundation is a great co-branded opportunity for businesses and organizations to utilize the loyal Texas FFA marketplace. More than a sponsorship, our programs are designed to create a win-win scenario for participants - many sponsors refer to our sponsorship opportunities as a partnership.

**OUR MEMBERS ARE PROVIDED THE
OPPORTUNITY TO NETWORKS WITH
INDIVIDUALS WHO ARE ESTABLISHED
AND THRIVING IN THEIR CAREERS,
IN HOPES TO PROVIDE MEANINGFUL
PROFESSIONAL NETWORKING.**

SUPPORT OUR **FUTURE LEADERS** AND BUILD BRAND LOYALTIES THAT LAST A LIFETIME



VALUE

RESEARCH SHOWS:

FFA SCHOLARSHIP WAS CRUCIAL TO STUDENT SUCCESS	90%
FFA STUDENTS SELECT ONE MAJOR AND GRADUATE ON TIME	87%
FFA STUDENTS WORKING WHILE ATTENDING COLLEGE	61%
HIGH SCHOOL AGRICULTURAL EDUCATION EXPERIENCE CREATED CAREER PATHWAY.....	82%

UNIVERSITY LEADERS REPORTED:

FFA STUDENTS GRADUATE FASTER THAN OTHER STUDENTS	53%
FFA STUDENTS ARE MORE ACTIVE IN COLLEGIATE ACTIVITIES	73%
FFA EXPERIENCE IS VALUABLE IN DECIDING ON ALLOCATION OF DEPARTMENTAL SCHOLARSHIPS	93%



