

Screwworm Awareness and Prevention During Steer and Heifer Validation

Validation

Each year in Texas, steers and heifers intended for exhibition at Texas major livestock shows and local/county fairs must be validated through the state Validation Program. Validation involves placing an official ear tag and tattoo in the animal's ear to establish ownership and eligibility for exhibition.



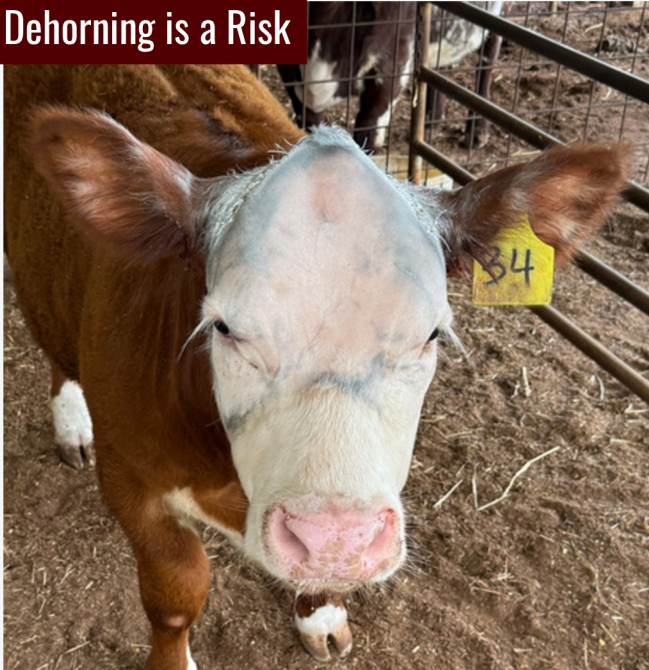
This pest can affect your cattle project!

The Screwworm fly seeks out living animals with wounds in which to deposit eggs. After hatching, screwworm larvae feed on living tissue, causing wounds to enlarge rather than heal. If treated early, animals will recover.

New World Screwworm larvae



Dehorning is a Risk



What are the risks?

- Ear Tag or Tattoo Sites
- Cuts and Scrapes
- Dehorning and Castration
- Areas of rubbing or irritation caused by insect bites
- Newborn calf naval
- Any exposed tissue!!

New World Screwworm Resources

[https://
agrilifeextension.tamu.edu/
new-world-screwworm](https://agrilifeextension.tamu.edu/new-world-screwworm)



Protecting Your Steer or Heifer Project When There is a Risk of Screwworms

Immediately After Validation Focus of Protection and Promoting Rapid Healing

- The faster a wound heals, the lower the risk of complications, including a screwworm infestation!
- **Inspect your tag and tattoo site daily.**
- Fly prevention for all flies reduces chances of delayed healing and potential exposure to screwworm flies searching for egg laying sites.



Commercially available topical products to help protecting wounds and reduce fly irritation

- Catron IV®
- Prozap Screwworm®
- Durvet Screwworm®
- AluShield® spray
- Wound-Kote®
- F10 topical

Veterinarian Prescribed Treatment and/or Preventative Products

- Dectomax®-CA1 injectable
- Exzolt® Cattle-CA1 topical
- Ivomec® injectable



Always follow label directions when using these products and consult with your veterinarian

Close inspection daily is the key to keeping your project healthy

- Inspect the entire calf daily!
- Any abnormal activity
- Head shaking
- Nasty smell
- Excessive rubbing
- Depression or lethargy
- Reduced feed intake
- **If you see maggots (fly larvae) in a wound or it is worsening, contact your veterinarian immediately!**

Careful Inspection During Daily Care Routine



<https://agrilifeextension.tamu.edu/new-world-screwworm>

