



LEADERSHIP GUIDE

TEXAS FFA ASSOCIATION AND TEXAS AGRICULTURAL SCIENCE EDUCATION

RESOURCE MATERIAL FOR:

2024 Quiz LDE
2024-2025 Texas FFA Officer Candidate Testing

Texas FFA Association
614 East 12th Street
Austin, TX 78701
www.texasffa.org

TEXAS FFA STATE
JR PREP PUBLIC SPEAKING

Table of Contents

Guide to the Texas FFA Association and Texas Agricultural Education



Chapter 1:

Texas FFA and Texas Agricultural Education

Section 1: What is Agricultural Education?

Section 2: AFNR Instructional Program, High School and Beyond

Section 3: Supervised Agricultural Experience (SAE)

Section 4: Texas FFA Strategic Priorities

Chapter 2:

Texas FFA History

Section 1: Getting Started

Section 2: Breaking Down Barriers

Section 3: Alumni and Collegiate Associations

Section 4: Development-Texas FFA Foundation

Chapter 3:

Organizational Structure and Key Relationships

Section 1: Headquarters

Section 2: Board of Directors

Section 3: Executive Board

Section 4: Board of Student Officers

Section 5: Texas FFA and the National FFA Organization

Section 6: Administrative Subdivisions

Section 7: Texas FFA and the Texas Education Agency

Section 8: Texas FFA and Local Chapters

Section 9: Texas Collegiate FFA Association

Section 10: Texas FFA Alumni Association

Section 11: Texas FFA Staff

Section 12: Communications

Section 13: Funding, Financial Management and Tax Status

Section 14: Other Agricultural Education Entities

Table of Contents

Guide to the Texas FFA Association and Texas Agricultural Education



Chapter 4:

Taking the First Step: Joining the Texas FFA

Section 1: Active Membership

Section 2: Other Membership Types

Chapter 5:

Leadership Outcomes: Development and Opportunities

Section 1: Texas FFA Effective Chapters Doctrine

Section 2: Student Leadership

Section 3: Camps, Conferences, Conventions

Chapter 6:

Getting Involved: Diversified Opportunities

Section 1: Advanced Degrees and Awards

Section 2: Agriscience Fair

Section 3: Leadership Development Events

Section 4: Career Development Events

Section 5: Speaking Development Events

Section 6: Texas FFA Scholarship Program

Appendix:

Texas FFA Association Constitution/Bylaws

Texas FFA Leadership Development Framework

Texas Agricultural Education Organizational Chart

Texas FFA Past Presidents, National FFA Officers

Texas Education Code 29.182

Chapter 1: Texas FFA and Texas Agricultural Education

The Texas FFA is the student leadership development arm of Texas Agricultural Education, a coalition of interrelated, interdependent yet independently governed entities committed to delivering exciting opportunities to Texas students through the Agriculture, Food and Natural Resources Education System. Each organization is led by an executive director and respective board of directors.



TEXAS FFA ASSOCIATION

Student Leadership
and Career
Development,
Curriculum Support



TEXAS EDUCATION AGENCY

**AGRICULTURE, FOOD AND
NATURAL RESOURCES**

Instructional
Program Standards,
Certification,
Curriculum
Development



TEXAS FFA FOUNDATION

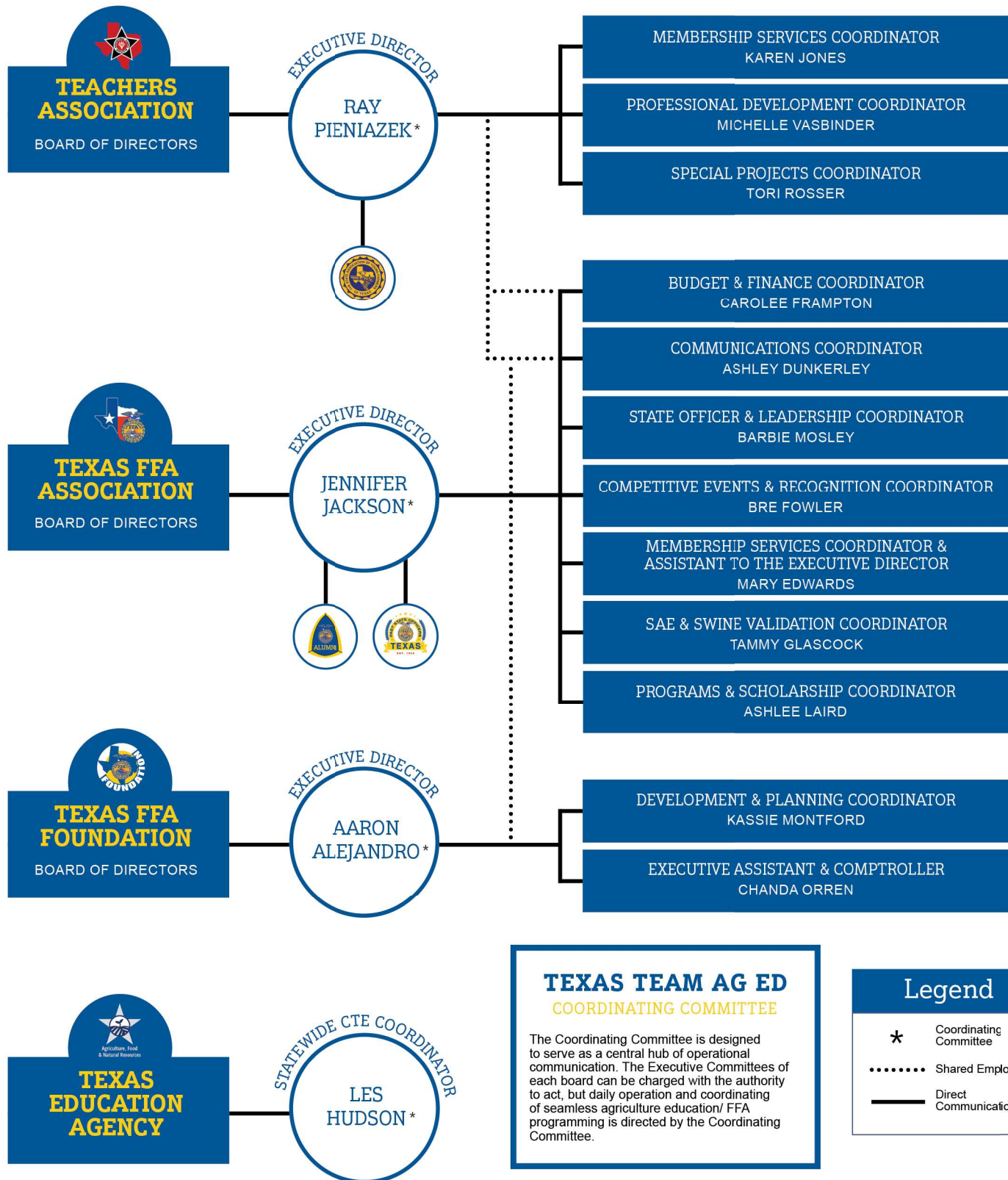
Fundraising,
Strategic
Partnerships



AGRICULTURE TEACHERS ASSOCIATION OF TEXAS

Teacher Services,
Continuing
Education, Legal,
Political Advocacy

TEXAS AGRICULTURAL EDUCATION ORGANIZATIONAL CHART



AGRICULTURE, FOOD AND NATURAL RESOURCES INSTRUCTION

Section 1 - What is Agricultural Education?

Agricultural education prepares students for successful careers and a lifetime of informed choices in global agriculture, food and natural resource systems. A Career Cluster is a grouping of occupations and broad industries based on commonalities. There are fourteen Career Clusters offered in Texas that provide an organizing tool for schools, small learning communities, academies and magnet schools. CTE in Texas utilizes each of the fourteen clusters. State level instructional oversight is provided by the CTE staff at the Texas Education Agency.

The Agriculture, Food and Natural Resources cluster includes occupations and careers in the planning, implementation, production, management, processing and/or marketing of agricultural commodities and services, including food, fiber, wood products, natural resources, horticulture, and other plant and animal products. It also includes related professional, technical and educational services. The AFNR cluster has been subdivided into six statewide programs of study: Agriculture Business, Leadership and Communications, Animal Science, Agricultural Technology and Mechanics Systems, Environmental and Natural Resources, Food Science and Technology, and Plant Science.

There are over 1,000 campuses across the state that offer instruction in Agriculture, Food and Natural Resources. There are 31 AFNR courses which provide rigorous and challenging opportunities for more than 222,894 young Texans. AFNR courses are found in rural, suburban and urban school districts and the classrooms and laboratories reflect a diverse and balanced gender and ethnic population.

CAREER AND TECHNICAL EDUCATION

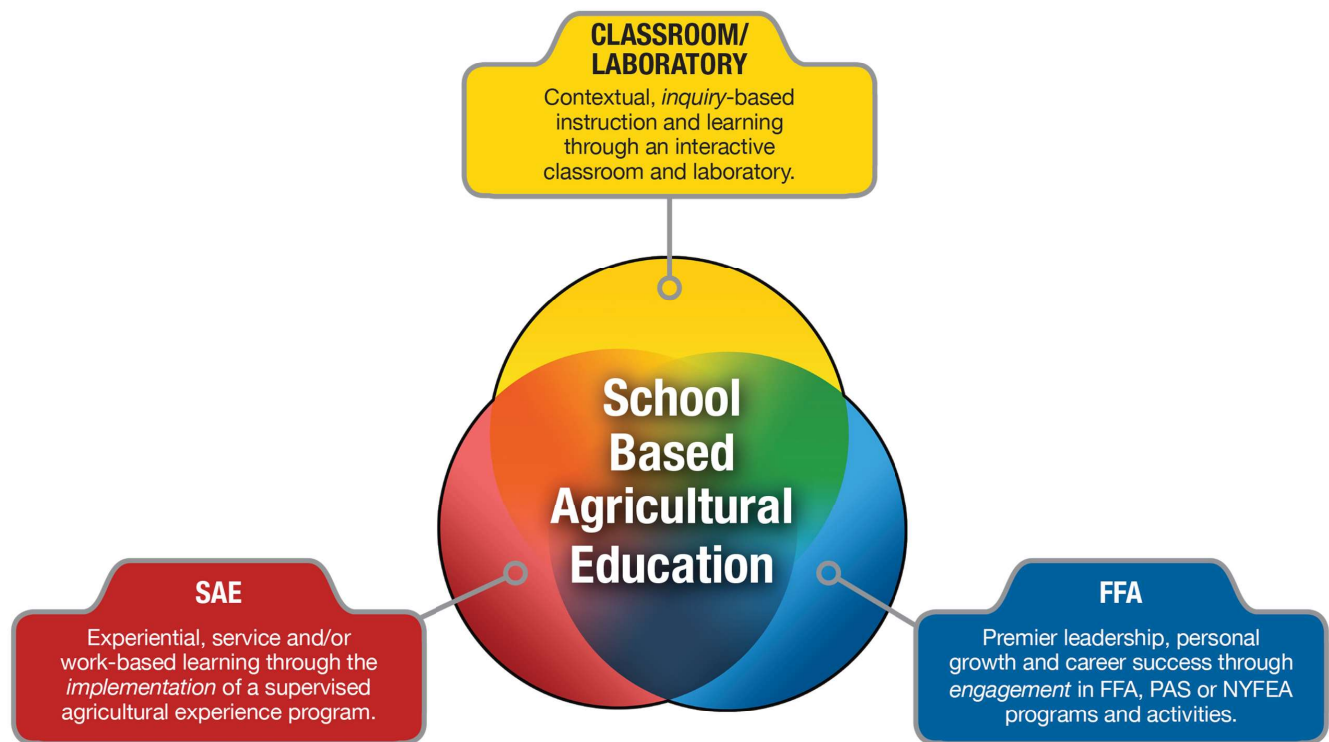
CAREER CLUSTERS

- Agriculture, Food and Natural Resources
- Architecture and Construction
- Arts, A/V Technology and Communications
- Business, Marketing, and Finance
- Education and Training
- Energy
- Health Science
- Hospitality and Tourism
- Human Services
- Information Technology
- Law and Public Service
- Manufacturing
- Science, Technology, Engineering and Mathematics
- Transportation, Distribution and Logistics



Chapter 1: Texas FFA and Texas Agricultural Education

The agricultural education delivery model contains three primary components which work in harmony to provide students with a well-rounded educational experience and skills which will easily transfer into a wide variety of employment opportunities in the industry. The instructional component includes the classroom instruction, laboratory experiences and work-based learning opportunities provided through the state approved curriculum. Another component of the agricultural education model is FFA, the Career and Technical Student Organization for AFNR students. FFA is recognized by the Texas Legislature as an integral part of the AFNR instructional program (Texas Education Code 29.182). FFA activities support classroom instruction, through competitive events which assess learning, foster excellent SAEs through awards and degrees and provide hands-on leadership and personal skill development through the student-led organization. SAE stands for Supervised Agricultural Experience, you will learn more about this component in Section 3.



Section 2 - AFNR Instructional Program, High School and Beyond:

TEXAS HIGH SCHOOL FOUNDATION PROGRAM ENDORSEMENTS

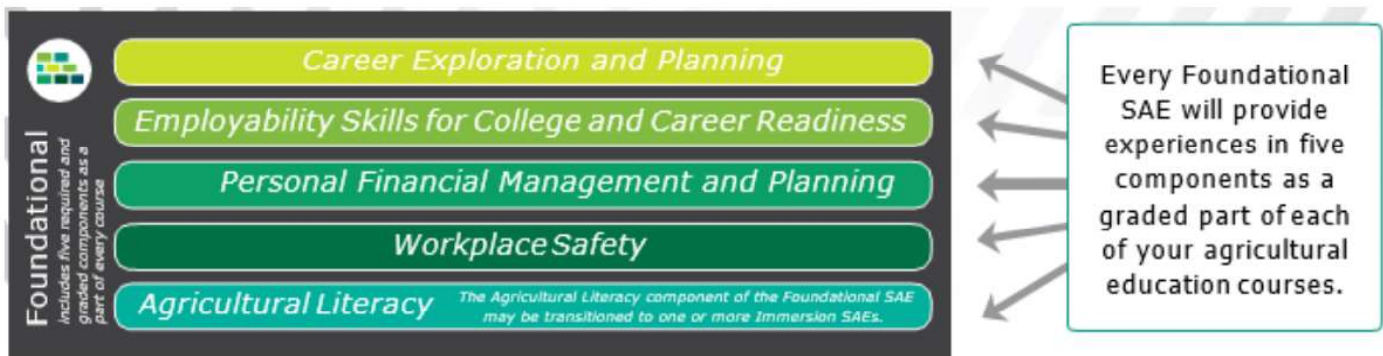
- Science, Technology, Engineering and Math (STEM)
- Business and Industry
- Public Services
- Arts and Humanities
- Multidisciplinary Studies

In 2013, the 83rd Texas Legislature established the new Foundation High School Program as the default graduation program for all students entering high school beginning in 2014-15. The Foundation High School Program provides students with a flexible approach to pursuing their interest and insuring readiness for college or a career. At the base of the Foundation High School Program is a 22-credit core that provides the minimum requirements to earn a Texas high school diploma. In addition, the Foundation High School Program provides opportunities for students to earn one or more of the five available endorsements (26-credit option). Along the way students may also qualify for the Distinguished Level of Achievement and/or Performance Acknowledgments. As mentioned, Texas students now have the opportunity to customize their high school education by selecting one of five endorsements. Students must select one of the endorsements by time they enter the ninth grade. All five endorsements may not be offered at every high school. Students earn an endorsement by completing the curriculum requirements for the endorsement, including 4th credit of math and science and two additional elective credits.

Students enrolled in a coherent sequence of Agriculture, Food and Natural Resources courses will normally meet the requirements to earn the Business and Industry endorsement. AFNR can often times also lead to the Science, Technology, Engineering and Mathematics (STEM) endorsement. Details for Texas graduation plans are found in the Texas Administrative Code. (19 TAC Chapter 74, Subchapter B.) Most of the very best jobs available now and in the future require education and training beyond a high school diploma. Whether you intend to pursue a high-demand, industry workforce credential from a community or technical college or a traditional four-year degree from a university, the choices made in high school will determine your future options. To best prepare yourself now for the transition to post-high school education or quality workforce training, choosing and taking the right classes is essential. The Distinguished Level of Achievement will ensure the best preparation for your future. The Distinguished Level of Achievement opens a world of educational and employment opportunities for you beyond high school. The Distinguished Level of Achievement will allow you to compete for Top 10% automatic admissions eligibility at any Texas public university, position you among those first in line for a TEXAS Grant to help pay for university tuition and fees, and ensure you are a more competitive applicant at the most selective colleges and universities.

Section 3 - Supervised Agricultural Experience (SAE)

A Supervised Agricultural Experience program (SAE) is a major component of agricultural education. While working on an SAE project, students learn to apply the concepts and principles taught in their agriculture classes to real-world problems and scenarios. As a part of each AFNR course you take, you will develop a foundational SAE aligned to your career interest. Many activities related to a foundational SAE may take place during your AFNR class and may change based on work you have accomplished.



FOUNDATIONAL SAE:

- **Career Exploration and Planning:** In this component, students will research and explore career opportunities within the AFNR industry. They will complete interest inventories and identify a career goal. Ultimately, students will be able to describe AFNR career opportunities and the path to achieving those opportunities.
- **Employability Skills for College and Career Readiness:** Through the Employability Skills component, students will develop the skills needed to succeed in both college and career. These skills include responsibility, communication, innovation, critical thinking and collaboration.
- **Personal Financial Management and Planning:** Crafting a personal financial management plan is the focus of the Personal Financial Management and Planning component. Students need to understand how personal financial practices like budgeting, saving and appropriate use of credit leads to financial independence.
- **Workplace Safety:** Where many of the ANFR career pathways contain hazardous occupations, it is critical that all students have a strong base of instruction and experience with workplace safety. In this component, students will examine and summarize the importance of health, safety and environmental management systems in the AFNR workplace.
- **Agricultural Literacy:** All students also need a base understanding of the width and breadth of the agricultural industry. This component will require students to research and analyze how issues, trends, technologies and public policies impact AFNR systems. They will also evaluate the nature and role of agriculture in society and the economy.

Chapter 1: Texas FFA and Texas Agricultural Education

Over time, you will likely identify opportunities to become even more immersed in gaining skills for a career in a certain area of the agricultural industry. Immersion SAEs provide a way to build upon your Foundational SAE and gain direct experience in your selected career path that colleges and employers will value when reviewing your application for entry or employment. The outcome of this progression from a Foundational to an Immersion SAE is an authentic path to college and career readiness.

IMMERSION SAE:

Even though Immersion SAEs are an extension of the Agricultural Literacy component of the Foundational SAE, they will contribute to a student's growth in all of the Foundational components in an authentic, contextualized manner. As students move beyond agricultural literacy to develop knowledge, skills and expertise within a specific AFNR pathway through an Immersion SAE, there will be more opportunities for recognition, awards and rapid development of employable skills for college and career readiness.

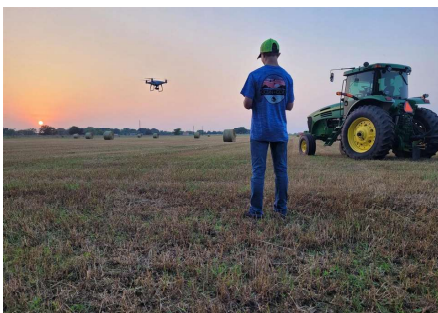
Over time, you will likely identify opportunities to become even more immersed in gaining skills for a career in a certain area of the agricultural industry. Immersion SAEs provide a way for students to build upon their Foundational SAE and gain direct experience in their selected career path.

The types of Immersion SAEs are:

- Placement/Internship
- Ownership/Entrepreneurship
- Research
- School Based Learning Enterprise
- Service Learning

The selection of Immersion SAEs should align to and support your career interest defined in your Career Plan. Immersion SAEs are designed to help you transition from career exploration to career preparation. Participation in an Immersion SAE will give you hands-on experience with critical thinking, communication and leadership skills.

SAE is a required component of all AFNR courses in Texas, as explained by the Texas Administrative Code chapter 130, subchapter A. SAE includes the skills necessary to plan, propose, conduct and evaluate the experiential learning activity.



STRATEGIC PRIORITIES



ENSURE A SOUND FINANCIAL FUTURE

ENSURE A FINANCIALLY SOUND FUTURE FOR THE TEXAS FFA AND ITS PROGRAMS IN PARTNERSHIP WITH THE TEXAS FFA FOUNDATION.



EFFECTIVE COMMUNICATION

DEVELOP PROACTIVE, EXTERNAL COMMUNICATION STRATEGIES THAT PROMOTE POSITIVE PUBLIC PERCEPTION OF AGRICULTURAL EDUCATION AND FFA, AND HIGHLY EFFECTIVE INTERNAL COMMUNICATION NETWORKS THAT REACH STUDENTS, TEACHERS, VOLUNTEERS, AND OTHER STAKEHOLDERS AND SUPPORTERS.



AGRICULTURAL KNOWLEDGE AND ADVOCACY

DEVELOP AND SUPPORT PROGRAMS THAT ENCOURAGE EXCELLENCE AND DIVERSITY IN SUPERVISED AGRICULTURAL EXPERIENCE PROGRAMS, COMPETITIVE ACTIVITIES THAT ARE INDUSTRY RELEVANT, HAVE A CLEAR TIE TO THE AGRICULTURE, FOOD, AND NATURAL RESOURCES INSTRUCTIONAL PROGRAM, AND ACTIVITIES THAT ARE CROSS-CURRICULAR AND DEMONSTRATE THE INTERDISCIPLINARY NATURE OF AGRICULTURE EDUCATION.



LEADERSHIP AND PERSONAL SKILL DEVELOPMENT

ENCOURAGE EXCELLENCE IN LEADERSHIP THROUGH PROGRAMS THAT SUPPORT THE DEVELOPMENT OF EFFECTIVE LOCAL PROGRAMS OF ACTIVITIES, INSTILL LEADERSHIP VALUES CONSISTENT WITH THE PRINCIPLES OF THE FFA, AND DEVELOP SKILLS FOR A LIFE OF CAREER AND PERSONAL SUCCESS.



ACADEMIC EXCELLENCE AND COLLEGE AND CAREER READINESS

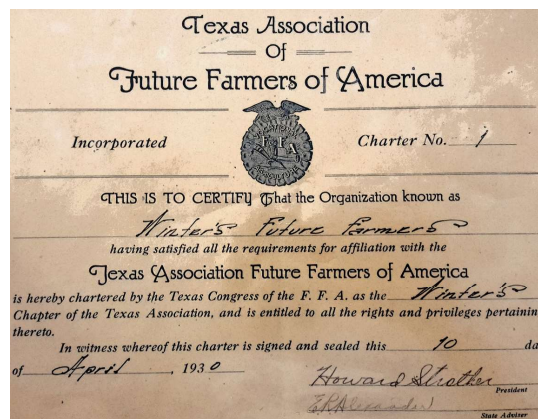
STIMULATE ACADEMIC EXCELLENCE BY THE DEVELOPMENT AND SUPPORT OF PROGRAMS THAT STIMULATE INTELLECTUAL DEVELOPMENT BY BROADENING SCHOLARSHIP OPPORTUNITIES FOR STUDENTS WHO SEEK TO PURSUE POST-SECONDARY EDUCATION AND WORKFORCE READINESS.



Chapter 2: Texas FFA History

Section 1 - Getting Started

President Woodrow Wilson signed the Smith-Hughes Act into law on February 23, 1917, but the act required legislative acceptance by each state. Texas Governor James Ferguson made the acceptance of the Smith-Hughes Act an item for the first of three called special sessions of the 35th Legislature in 1917. State Senator Claude B. Hudspeth of El Paso filed Senate Bill 54, which became law on June 15 to take effect 90 days later.



Five new vocational agriculture departments were approved that fall by the State Board for Vocational Education. Three of the new programs were approved to begin on December 1: Corsicana State Orphans Home, Penelope and Yancey. The Hillsboro and Tuleta programs were approved to begin on January 1, and February 1, respectively.

DID YOU KNOW?

In Texas, instruction in agriculture pre-dated this federal legislation. Mr. B. Youngblood of Henderson introduced an elementary agriculture course in 1903 in the public schools of that east Texas community. In 1907, the Texas Legislature mandated that, with the exception of schools with an academic population of more than 300, all schools in the state would be required to offer the elementary agriculture class. Beginning in 1909, teacher training in agriculture was mandated at designated Texas colleges.

In all, 32 schools were approved to teach vocational agriculture in the 1917-18 school year. Similarly, vocational agriculture departments were established throughout the nation and subsequently many states began forming regional and state future farmer organizations. Virginia established the Future Farmers of Virginia, which became a model for other states and ultimately for the formation of a national organization.

The first Future Farmers of Texas chapter was organized at Winters in 1928 and the first annual meeting of the FFT was held in College Station on April 22, 1929. Arthur Ellis of New Waverly was elected president of the fledgling organization, but resigned his office a few months later, allowing E. J. Hughes of Dublin to serve as acting president

until the state association met again in Dallas in October of the same year. At that meeting, Howard Strother was elected president of the FFT, and seven days later, a state charter for a Texas FFA Association was issued by the National Future Farmers of America. Thus, Strother became the first president of the Texas FFA. Agricultural and Mechanical College of Texas (Texas A&M University) teacher educator E. R. Alexander is credited as being the father of the Texas Future Farmer movement and served as the organization's first advisor until 1931.

On April 10, 1930, the Winters chapter was the first of more than 13 chapters from the Texas Association to be officially chartered by the National Future Farmers of America.

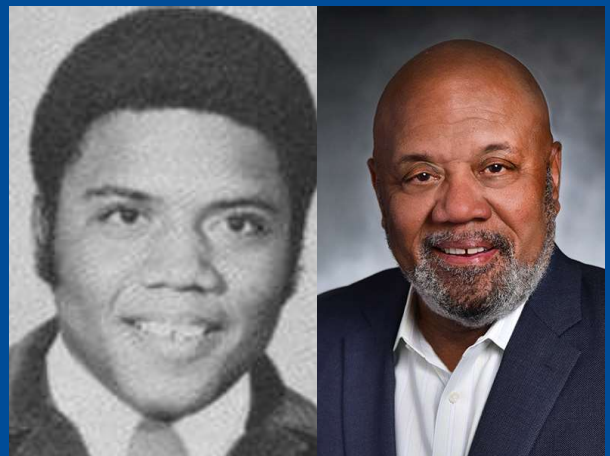
Section 2 - Breaking Down the Barriers

Segregation is part of our society's history, and the history of agricultural education mirrors societal norms and attitudes. In our nation's era of segregation, it was deemed legal and appropriate for African-American students to be relegated to "separate but equal" schools, a practice affirmed by an 1896 U.S. Supreme Court decision, *Plessy v. Ferguson* that upheld state segregation laws. Thus, a separate, parallel organization for agriculture students was created on August 4, 1935—the New Farmers of America. The NFA and FFA shared the same core values and had similar traditions. In 1954, the racial wall that separated white and black began to crumble with the landmark U.S. Supreme Court decision *Brown v. Topeka Board of Education* that held that separate schools were inherently unequal. The last two state presidents elected under this segregated system were A. D. Pinson of Neches (NFA) and Calvin Brints of Crosbyton (FFA). Pinson was subsequently elected as national NFA president, serving in that capacity when the NFA was merged into the FFA in 1965.

In 1972, Fred McClure of San Augustine became the first African-American member to serve as president of the Texas FFA and later became the first to serve as a national officer. He served as the National FFA Secretary in 1973-74, student body president at Texas A&M University (the first African-American to do so) and an adviser to two U.S. presidents (Ronald Reagan and George H.W. Bush).



2015 marked the 50th anniversary of the FFA/NFA merger. To celebrate this historic occasion, A.D. Pinson attended a special ceremony on-stage and was presented with a replica of his original NFA officer jacket.



In 1972, Fred McClure of San Augustine became the first African-American member to serve as president of the Texas FFA. McClure would later serve as National FFA Secretary.

Section 2 - Breaking Down the Barriers



Aaron Alejandro was the first Hispanic member to serve as Texas FFA president in 1985.



In 1976, Becky Leake of Sherman became the first female FFA member in Texas to be elected to state FFA office

In 1985, Aaron Alejandro became the first Hispanic member to be elected president of the Texas FFA. He now serves as Executive Director of the Texas FFA Foundation. For the first 40 years of its existence, the Future Farmers was exclusively male. In 1935, the delegates to the national FFA convention passed a resolution denying participation to any state association that allowed girls to be listed on the state's official roster. Girls were allowed to participate as FFA Sweethearts and some chapters designated a female student to be the chapter's typist. For several years there was considerable discussion and debate concerning the question of female membership. In 1968, Texas FFA President Bill Sarpalius, using the female membership issue as a bargaining chip to secure additional national delegate representation, moved the motion to admit girls to membership in the national organization. At the 1969 Texas FFA Convention in Fort Worth, with Sarpalius presiding, delegates approved an amendment to the state's constitution giving the green light to admit girls to membership in the Texas FFA. Becky Leake of Sherman became the first female member to serve as a Texas FFA state officer; Erica Clark of Mansfield became the first female to be elected president of the Texas FFA Association in 1991.

Section 3 - Organization of Statewide Alumni and Collegiate Association

Engaging the Alumni

Interest in launching an alumni association began as early as 1936 when the Texas FFA adopted language in its constitution that encouraged the formation of alumni chapters, but there is no record of any of these local organizations. A group of past recipients of the state and American degrees known as the Gold Key Club emerged. Beeville organized the first of these chapters, but the movement was short-lived, fading away at the close of the 1930's. In 1950 a group of former members founded the Texas Future Farmer Alumni Association. This effort was short-circuited by the military draft that enlisted most of the organization's leadership. Another group convened in the summer of 1953 calling themselves the Young Farmers of Texas. Later this organization would become linked to the agricultural education's adult education component. The Texas FFA Alumni Association as it is known today was organized in 1971. Former Texas FFA Executive Secretary E.C. "Dick" Weekly was the Texas FFA Alumni Association's first president.



Organizing the State Collegiate Association

Collegiate FFA chapters have been in existence since the earliest days of the FFA. Their activities, however, were confined to reaches of each local college or university chapter. In 2001, collegiate representatives met at the state FFA convention in Houston to initiate the process of developing a statewide organization, a process that culminated in the adoption of a state collegiate FFA constitution at the 75th Texas FFA Convention in Houston in 2003. Vanessa Brossman of Sam Houston State University was Texas's first Collegiate FFA State President. At the 90th National FFA Convention, delegates voted to remove Collegiate membership as a type of membership. It became evident that the collegiate membership structure was confusing. This, coupled with a very limited number of collegiate members, a select number of services and resources provided to those members and a much more intentional move by alumni to activate and engage every member into alumni, led to a constitutional proposal to remove Collegiate membership. Following National FFA's lead, delegates at the 90th Texas FFA Convention voted that the Alumni Association would absorb Collegiate membership.

Section 4 - Development - Texas FFA Foundation

The Texas FFA Foundation came about, in part, due to the gifts of C. J. “Red” Davidson, a Fort-Worth, oilman who, on his morning walk in downtown Fort Worth, happened onto a group of well-dressed and groomed blue-corduroy-clad boys streaming into the Tarrant County Convention Center. Impressed with their conduct and appearance, he walked into the 41st Texas FFA Convention, spending the better part of the morning watching the state officers conduct the business of the state association and give eloquent presentations. This was the beginning of a relationship resulting in the establishment of the C. J. “Red” Davidson Scholarships. Upon Mr. Davidson’s passing, stocks were given to ensure the perpetuation of the scholarship program. The stocks quickly grew in value, and the Texas FFA’s leadership realized the need to create a foundation to manage the C.J. “Red” Davidson assets and raise additional funds for scholarships and Texas FFA leadership development opportunities. The Texas FFA Foundation became a reality in 1987. Jay Eudy, then director of agricultural science and technology, was the first Chairman of the Texas FFA Foundation Board of Directors.

In 2000, a focus group representing a cross section of agricultural education stakeholders—teachers, state staff, farmers, ranchers, nonprofit, and agribusiness assembled in Austin to chart the future needs of the organization. This group became known as the “Texas FFA Leadership Council.” The needs and priorities were captured in a sponsorship menu. The menu became the outline for a capital campaign. Two targets were set: a victory goal of \$3.5 million dollars and a challenge goal of \$15 million dollars. The goal was to endow a corpus of money whose investment interest could support the goals identified by the leadership council.

The Texas FFA Foundation Capital Campaign kicked off at the 74th Texas FFA Convention in Fort Worth in 2002 under the leadership of Capital Campaign Co-Chairs Paul Engler, President and CEO of Cactus Cattle Feeders in Amarillo and Anne Anderson, an Austin-based strategic consultant. The campaign was launched with a \$1.3 million gift from Ford Motor Company and Texas Ford dealers. At the 77th Convention in 2005, the Texas FFA Foundation announced that its three-year goal of \$3.5 million had been met and surpassed, with more than \$4.2 million raised.

As a result of the efforts, strategies, and networks established through the capital campaign, best practice fundraising strategies were developed to create operational and sustainable resources to support the Texas FFA. In 2006, the Foundation secured the FFA’s first title co-sponsors of the state convention. Justin Brands and Farm Credit Banks of Texas teamed up to underwrite a sizable portion convention operations. The Texas FFA Foundation has maintained that relationship to date.

A portion of the Ford gift made possible the construction of the Agricultural Education / Texas FFA Leadership Center in Austin. Prior to its construction, the Texas FFA Association, Texas FFA Foundation, and Vocational Agriculture Teachers Association of Texas (VATAT) were housed in the VATAT headquarters building at the same address, a building that was built to accommodate only the VATAT and its credit union. Groundbreaking for the project took place in April of 2003, the building was finished in November of the same year with official ribbon cutting ceremonies in January 2004.

Chapter 2: Texas FFA History

Today the Texas FFA Foundation continues its mission to permanently endow and support Texas FFA programs by forging corporate sponsorships, encouraging individual giving, and seeking to engage former members in giving back to the program that, for many, was the foundation of a successful career. Current corporate partners include Ag Trust Farm Credit, Ag Texas Farm Credit Services, Cavender's, iCEV, Texas Ford Dealers, Justin Boots, Kubota, Wyndham Hotels & Resorts, McCoy's Building Supply Centers, PIERCE, Priefert Ranch Equipment, RFD-TV, Seitz Fundraising, Slate Group. Superior Trophies, Texas Army National Guard, Mission Matters, and Texas Farm Bureau.

In addition to our corporate sponsors, we also are honored to have support of our academic and award scholarship sponsors. Scholarship sponsors include: Fort Worth Stock Show Syndicate, the Fort Worth Stock Show and Rodeo, Houston Livestock Show and Rodeo, the Richard Wallrath Educational Foundation, Rodeo Austin, San Antonio Livestock Exposition, C.G. Scruggs Family, Blue Mountain Equipment / STIHL, Cactus Feeders, Ag Trust Farm Credit, Ag Texas Farm Credit Services, George and Anne Butler Foundation, J. Lawson Sowell Memorial, La Quinta by Wyndham, McCoy's Building Supply, Texas Cotton Ginners' Association, Texas Independent Ginners Association, Texas Farm Bureau, Texas Pork Producers, Texas Young Farmers, VATAT Credit Union, Vickie Rosenbusch Memorial, Texas FFA Association, and the Texas FFA Foundation.

In addition to corporate interests, individuals have also joined the effort to support the Texas FFA into perpetuity. Former Texas FFA President and National Officer Jim Prewitt, who was a prominent Dallas-area nurseryman became the catalyst for the development of the agriscience fair scholarship program. He is one of the leading individual contributors to the Texas FFA Foundation. In 2005, Centerville Rancher Richard Wallrath made Texas FFA history by becoming the Texas FFA Foundation's all-time leading contributor with gifts totaling more than \$1.5 million. Herman & Bobbie Wilson made significant gifts to support the ATAT's Mentor Program. Gordon Davis also made a large contribution to support the ATAT's scholarship program.



In 2005, the announcement that the Texas FFA Foundation Capital Campaign had met and surpassed its three-year goal brought the confetti down as convention Texas FFA celebrated this significant milestone in an effort to build a \$15 million endowment. The three-year goal was the first of the three stages in the overall endeavor.

Section 1 - Headquarters

The Texas FFA Association is headquartered at the Ford Agricultural Education Texas FFA Leadership Center two blocks east of the Texas State Capitol at 614 East 12th Street. The building, completed in 2003, was made possible by a gift from Ford Motor Company and Texas Ford Dealers and also houses other Texas Agricultural Education entities—the Texas FFA Foundation, Vocational Agriculture Teachers Association of Texas and the VATAT Credit Union. The Texas FFA Association offices occupy the building's ground floor, and the other entities are housed on the second floor. Board meetings hosted in Austin are held in the third-floor conference room. FFA members are encouraged to visit the Leadership Center when coming to or passing through Austin. The conference room may be available for chapter officer training.

Section 2 - Board of Directors

The Texas FFA Association provides leadership and management for active, junior, collegiate and alumni FFA members. A 19 member board of directors, comprised of active agricultural educators, business and industry representatives and the managerial leadership of the ATAT and Texas FFA Foundation, meets quarterly and provides governance and leadership to the state association.

Five current Agriculture, Food and Natural Resources teachers are elected to the board by the Vocational Agriculture Teachers Association of Texas. Six business and industry representatives, a teacher educator, a school administrator and an additional Agriculture, Food and Natural Resources teacher are elected to the board by a nominating committee process. The executive directors of the ATAT and Texas FFA Foundation serve on the board. The State Program Director for Agriculture, Food and Natural Resources, Texas Education Agency along with representatives of the alumni and collegiate associations serve as ex-officio members of the board.



Jennifer Jackson

is the Executive Director of the
Texas FFA Association



Lynita Foster

of Madisonville, serves as the
2024-25 Chairman of the
Texas FFA Board

Section 3: Executive Board

The Texas FFA Association's executive board includes the chairman of the board of directors, the executive directors of the Texas FFA Association, Texas FFA Foundation, Vocational Agriculture Teachers Association of Texas, the CTE Statewide Coordinator for Agriculture, Food and Natural Resources, and the state FFA president or another designated student officer. The executive board interprets policy and renders decisions deemed to be more than a management decision, handles appeals and other administrative matters presented by the executive director.

Texas FFA Board of Directors

Chairperson:

Lynita Foster, Madisonville

Vice Chairperson:

Troy Oliver, Sealy

Treasurer:

Ray Pieniazek, Austin

Members

Aaron Alejandro, Austin
Dr. Candis Scallan, Nacogdoches
Aron Hutchins, College Station
Jeff Thayne, San Antonio
Blake Vineyard, Lubbock
Dr. Whit Weems, Waco
Melissa Spicer, Florence

Toby Long, Hamilton
Marty Resendez, Klein
Jessica Reeves, Ingram
Ashley Abston, Houston
Paul Boff, Jarrell
Michael Cooper, Houston

Ex-Officio Members:

Les Hudson, Austin (TEA)
Kelly White, Kyle (Alumni)

Executive Director:

Jennifer Jackson, Austin

Section 4 - Board of Student Officers



2024-2025 Texas FFA State Officer Team

Left to Right: Jeremiah McGee, Area VI; Luke Anderson, Area VII;
Augustus Mushinski, Area III; Cash Smith, Area XI; Kasadi Neel, Area X;
Thomas Barton, Area IX (First Vice President); Hunter Lawson, Area IV (President);
Addie Carlson, Area I; Walton Marshall, Area II; Caden Garner, Area V;
Brady Lambert, Area XII; Tanner Williams, Area VIII

A team of twelve Texas FFA State Officers represent each of the twelve area associations within Texas FFA. These student officers work in partnership with the board of directors to develop policy for the Texas FFA Association and provide student leadership to Texas FFA members. Each area association selects one candidate to serve on the state officer team during the annual state FFA convention. An interview and the vote of the delegates then determines the President and First-Vice President. All officers have responsibilities to the state association and leadership duties in their areas. State officers serve a one-year term.

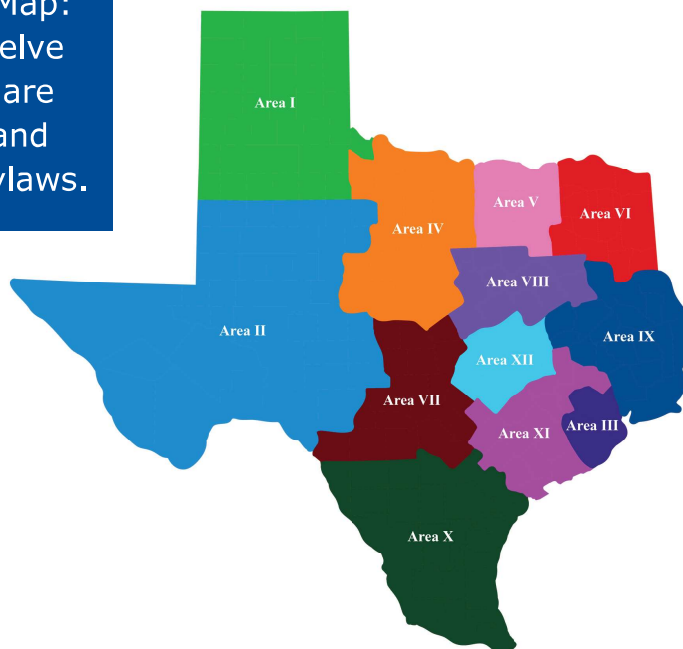
Section 5 - Texas FFA Association and National FFA Association

Texas FFA Association is a chartered state association of the National FFA Organization. The national organization can be described as a confederation of state associations, each governed by its own constitution, bylaws and policies in harmony with the broad framework established by the National FFA Organizations constitution, bylaws and by Public Law 105-225 (previously 81-740). The National FFA Organization does not exercise direct oversight, but establishes boundaries through the provisions of these policies and governance over state association operations.

Section 6 - Administrative Subdivisions, Districts, and Areas

The state is divided into twelve administrative areas which operate as semi-autonomous associations. Texas has had as many as 12 areas, for many years, these areas were a function of state education agency staffing. At one time, each of these areas was the territory for an area supervisor who provided direct oversight of local departments in their respective area. Currently, each area has a leadership structure headed by an area coordinator and/or area teacher president. Each area is further divided into districts. The number of districts per area ranges from four to seven, and there are 66 districts in the state. According to the state bylaws, the state must consider re-alignment at least every ten years and the areas must consider re-districting at least every five years. On July 13, 2016 during the 88th convention business session, delegates across the state voted in favor of area realignment which would add two new areas to the association. In July 2018, Texas FFA increased from 10 to 12 areas.

Texas FFA Area Association Map:
Texas FFA is divided into twelve administrative areas which are broken along county lines and described in the Texas FFA bylaws.



Section 7 - Texas FFA Association and the Texas Education Agency

The Texas Education Agency (TEA) provides leadership for Texas education and is headed by State Education Commissioner, Mike Morath, who was appointed by Governor Greg Abbott in 2016. The 15-member State Board of Education adopts instructional standards called Texas Essential Knowledge and Skills (TEKS), textbooks and graduation plans, approves charter schools and manages the Permanent School Fund, a \$38 billion endowment that funds instructional materials and technology and guarantees bonds approved by local school districts. State Board of Education members are elected to four-year terms in the November general election. Its chairman is nominated from the members of the board by the Governor and confirmed by the State Senate. For a significant portion of its history, the Texas FFA Association operated through the Texas Education Agency, and FFA staff members were TEA employees. In 1998, the FFA was moved outside of the agency and a board of directors made up of agricultural educators and industry representatives was established to provide leadership for the organization. The Texas FFA Association's executive director is employed by the Board of Directors. Les Hudson is currently the Statewide Career and Technical Education Coordinator for Agriculture, Food and Natural Resources and provides instructional and curricular leadership for Texas agricultural education. In this role, Mr. Hudson is responsible for curriculum development, textbook adoption, instructional program standards and teacher certification as well as teacher professional development. FFA is an integral part of the Agriculture, Food and Natural Resources instructional program, and it is critical that the FFA remain tied to this foundation. Although the relationship of the TEA and FFA has changed in recent years, the program director remains actively engaged in the leadership of the Texas FFA as an ex-officio member of the board of directors and as a member of the executive board.



Mike Morath
Commissioner of Education



Les Hudson
CTE Statewide Coordinator
for Agriculture, Food and
Natural Resources

Section 8 - Texas FFA Association and Local Chapters

The Texas FFA Association issues and revokes charters in accordance to the mandates of the state association's constitution, bylaws and board-adopted policies, provides support services to local chapters and administers events which support the agricultural education instructional programs. Direct oversight of local programs is the domain of local boards of trustees and administrators. Each chapter has requirements mandated by the state constitution and bylaws to remain in good standing with the state association. Pursuant to National FFA Organization policy, the state association has stewardship of the FFA emblem and trademarks, and the state association is duty bound to act when these are used inappropriately.

Section 9 - Texas FFA Alumni Association

The Texas FFA Alumni Association operates under the auspices of the Texas FFA Board of Directors in accordance to policies contained in the organization's memorandum of understanding and operating policies. The purpose of local alumni affiliates is to provide support to local Agriculture, Food and Natural Resources departments and FFA programs. Texas FFA Alumni accounts are managed by the Texas FFA Association staff. The Texas FFA Alumni Association holds their annual meeting in conjunction with the state FFA convention and provides financial support to the Texas FFA Association and the Texas FFA Foundation. Kelly White of Kyle serves as the president of the Texas FFA Alumni Association. The Past State Officers Alumni is a statewide alumni association affiliated with the Texas FFA Association. Steve Mosley serves as the 2023-2024 Past State Officer Alumni Chairman.



Chapter 3: Organizational Structure and Key Relationships

Section 10 - Texas FFA Staff

The Texas FFA Association has eight employees: executive director, program and scholarship coordinator; competitive events and recognition coordinator; state officer and leadership coordinator; membership coordinator; and SAE/Validation coordinator are full-time Texas FFA Association employees. The budget and finance coordinator is an employee of the Texas FFA but shares financial management responsibilities with the ATAT and Texas Young Farmers. The ATAT communications coordinator is currently the editor of the Texas FFA News, as well as the manager of Texas FFA social media.



Jennifer Jackson
Texas FFA
Executive Director



Tammy Glascock
SAE and Swine
Validation Coordinator



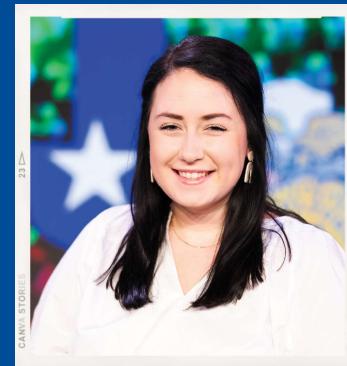
Carolee Frampton
Budget and Finance
Coordinator



Bre Fowler
Competitive Events &
Recognition Coordinator



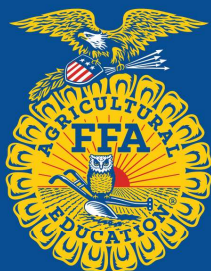
Ashley Dunkerley
Communications
Coordinator



Mary Edwards
Membership Coordinator
& Executive Assistant



Barbie Mosley
State Officer and
Leadership Coordinator



Ashlee Laird
Program and Scholarship
Coordinator

Section 12 - Communications

Texas FFA Association disseminates news and information through a variety of media avenues.

TEXAS FFA NEWS

Texas FFA News Online is the official online news outlet of the Texas FFA Association. The news site highlights agricultural issues, FFA activities and events and recognizes FFA members for their accomplishments. Along with articles and pictures, the Texas FFA News Online hosts videos, links and other content. Sharing stories and spreading content is now easier with the social media integration of Facebook, Twitter, Instagram and the ability to email articles to other readers.

TEXAS FFA CONVENTION STUDENT MEDIA PROGRAM

The Texas FFA Convention Student Media Program provides a professional environment for students to cultivate skills related to journalism, photography, and video production. It is a week-long experiential learning environment that enables members to apply creativity and technical skills in a fun and practical setting.

TEXAS FFA WEBSITE

TexasFFA.org is the Texas FFA Association's Web site. General information, policies, event rules, support materials, news, and updates can be found online. Additionally, websites for collegiate and alumni associations and the other members of Texas Agricultural Education can be accessed from the Texas FFA's website.

FFA UNRAVELED: A TEXAS FFA PODCAST

FFA Unraveled: A Texas FFA Podcast is an effort for us to do just that, unravel all of the programs and opportunities offered to Texas FFA members, and break them down in order to enable listeners to better understand and develop an action plan to move forward.

WHAT'S GROWING ON? NEWSLETTER

Texas FFA's What's Growing On? Newsletter is a constantly evolving outlet that showcases a vast array of resources and opportunities for Texas FFA members and advisors!

MY TEXAS FFA

The My Texas FFA Initiative combines two innovative ways for you to connect with us. MyTexasFFA.org is an interactive promotional website designed in partnership with the Texas FFA Foundation. The webpage contains video footage of agricultural education and FFA testimonials from students, parents, educators, sponsors and former members.

Section 13 - Funding, Financial Management, Tax Exempt Status

Revenues to fund Texas FFA Association activities come from membership dues, swine validation, sponsorships and contributions, convention registration fees, federal monies through the Carl Perkins Federal Career and Technology Education Fund and investments. The Texas FFA Foundation provides funding for a portion of the scholarship programs, convention events and for special projects. FFA monies are expended in accordance to audit controls and board policies. The budget and finance committee of the Texas FFA Board of Directors/Board of Student Officers develops a budget for each fiscal year to be presented to the delegate body at the annual convention business session. The Texas FFA Association undergoes an annual audit conducted by an independent auditor. The double audit ensures the financial integrity of the Texas FFA Association. The Texas FFA Association is tax exempt educational organization pursuant to section 501(c)(3) of the federal tax code.

Section 14 - Leadership and Organizational Structure of Other Agricultural Education Entities

Texas FFA Foundation

Established in 1987 exclusively for the benefit of the Texas FFA and its members, the Texas FFA Foundation is the fundraising arm of Texas Agricultural Education. Leadership for the foundation's activities is provided by a board of directors, and managerial leadership is administered by an executive director. The foundation board currently has 30 members. The foundation is in the midst of a long-term campaign to permanently endow Texas FFA programs and scholarships. The executive director of the Texas FFA Foundation is a member of the Texas FFA Association board of directors and executive board. Like the Texas FFA Association, the Texas FFA Foundation is a 501(c)(3) non-profit organization.



Aaron Alejandro is the
Executive Director of the
Texas FFA Foundation



Mitchell Dale of Dickinson chairs
the Texas FFA Foundation
Board of Directors

Agriculture Teachers Association of Texas

The ATAT was established in 1940 and chartered in 1951 to provide a voice for Agriculture, Food and Natural Resources teachers in the educational policy-making process, recognition for educator achievements and professional services. Leadership for the organization comes from an elected board of directors. Directors are apportioned by teacher membership in each of the 12 area associations—one director per 28 members with a minimum of two directors per area. The ATAT Board of Directors now has 83 members. An executive director provides managerial leadership and is the political officer of Texas Agricultural Education. The ATAT elects five of its members to the Texas FFA Association board of directors. The ATAT Executive Director is a Texas FFA board member by position and serves as treasurer of the board of directors. Because the ATAT engages in political advocacy, it is not eligible to have 501(c)(3) tax exempt status. It is a not-for-profit organization as described in 501(c)(6) of the federal tax code.

Teacher Education Institutions

Eleven universities prepare and certify students to serve as agricultural educators. Students who wish to pursue an agricultural education career can find teacher education programs at the following Texas universities: Angelo State, Sam Houston State, Stephen F. Austin State, Sul Ross State, Tarleton State, Texas A&M, Texas A&M-Commerce, Texas A&M-Kingsville, Texas State, Texas Tech, and West Texas A&M. Each institution is governed by their respective system board of regents. All institutions actively collaborate with each other to strive for some consistency in certification programs.



Ray Pieniazek is the ATAT's Executive Director and the Texas FFA's Board Treasurer



Toby Long of Hamilton is the 2024-2025 ATAT President

VATAT Credit Union

The VATAT Credit Union was established in 1961 to provide financial services to Agriculture, Food, and Natural Resources teachers and their families. A seven-member board of directors provides leadership and oversight for the VATAT Credit Union, and a manager provides daily administration of its operations. The VATAT Credit Union provides financial services to the Texas FFA Association, Texas Collegiate FFA Association, Texas FFA Alumni Association, and other entities of the Texas Agricultural Education Family. Dr. Steve Forsythe is the chairman of the VATAT Credit Union Board of Directors. Meredith Hartman serves as the Credit Union manager.

Young Farmers of Texas

The Young Farmers of Texas was initially founded as an alumni group in 1954, but evolved into an organization of young men and women who were engaged in the adult education facet of local agriculture departments. The Young Farmers of Texas has a membership of approximately 800 in 48 local chapters. The executive committee with 18 positions functions as a board of directors for the Young Farmers, and an Executive Secretary provides managerial leadership for the organization's operations. The Texas FFA Association provides bookkeeping services for the Young Farmers. The Young Farmers are also a scholarship and convention sponsor. Sandra Choate serves the organization as the Executive Secretary.



Steve Forsythe is the Chairman of the VATAT Credit Union.



Sandra Choate is Executive Secretary of the Texas Young Farmers

Section 1 - Active Membership

Those who had the foresight, vision and leadership to establish the FFA wrote to future generations a promissory note—a check. The first step in cashing that check—taking advantage of this remarkable opportunity—is to join. Texas FFA membership has continuously grown since 2001. In the last ten years, net membership growth is +69,706. Texas is the nation’s largest state FFA association and the current membership level continues to set annual records for any state FFA association.

Texas FFA Membership

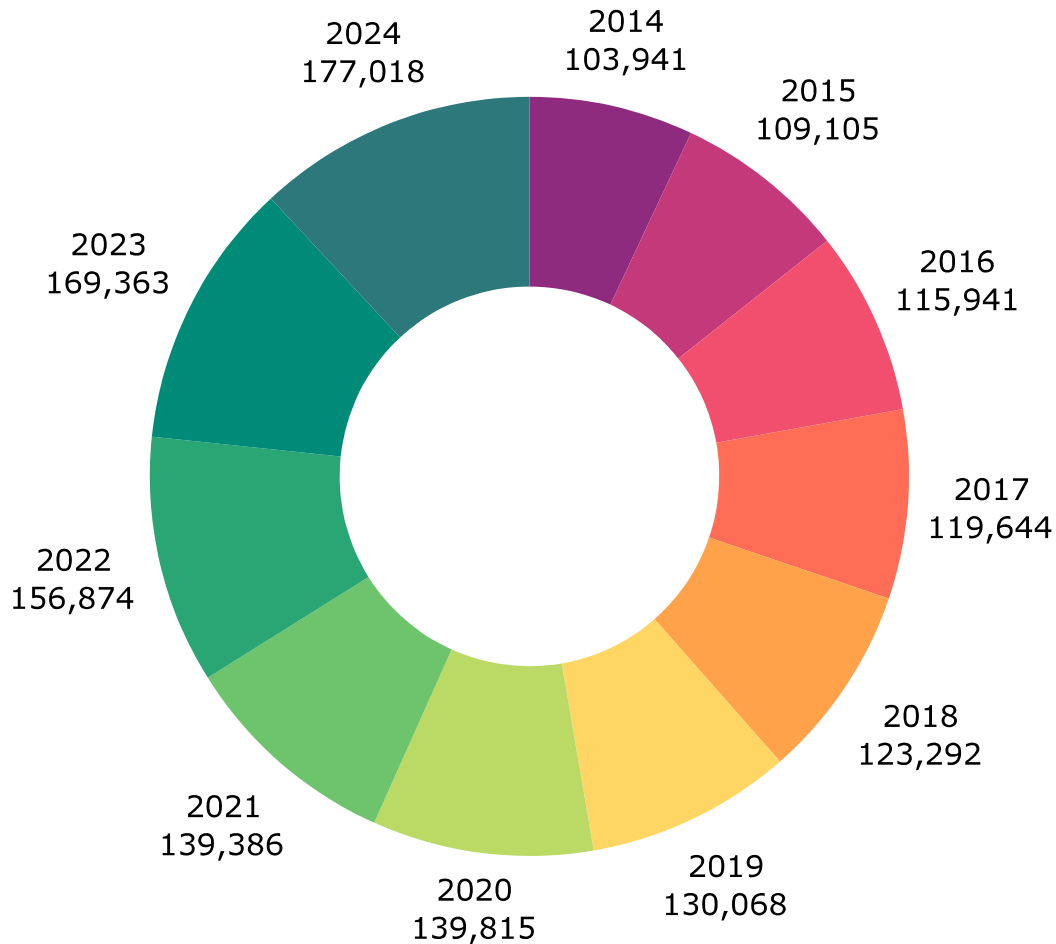
The Integral Nature of FFA and Agricultural Education

The Texas FFA Association is the organization of, by, and for students enrolled in Agriculture, Food, and Natural Resources programs and pursuant to the Texas Education Code Section 29.182, is an integral part of the Agriculture, Food, and Natural Resources Career and Technical Education program. FFA programs are intended to be applied activities related to the classroom and laboratory instructional programs. Thus, membership guidelines should reflect this philosophy and support co-curricular enrollment in Agriculture, Food and Natural Resources courses.

Enrollment Requirement for Active Membership

Active membership in the Texas FFA Association is established by enrolling in an approved Agriculture, Food and Natural Resources course. With increasing graduation requirements, Texas FFA Association has established policies which support enrollment in such courses, while giving a student some degree of flexibility in maintaining continuous membership to apply for degrees and awards. After completing two consecutive semesters, they may maintain continuous membership for a maximum of one year while not enrolled in a course provided they maintain an approved supervised experience program that is documented in an approved record book. This policy does not negate more stringent enrollment requirements for participation in leadership development events, speaking development events, career development events or any other activity that has an enrollment standard. This does not preclude local chapters and other associations from adopting more stringent enrollment requirements for membership or for holding elected offices.

Membership Over the Years



Membership Dues

Texas FFA Association state dues are \$7.00 for active members. In addition to state dues, a student must also pay local, district, area and national dues. National dues are \$7.00. Local, district and area dues are set by the student delegates of the respective associations. Membership dues are used to support operations and activities that are of benefit to all members. For the fall semester, dues and rosters must be submitted electronically via the Texas FFA online roster management system by November 1 to be in good standing with the state association and March 1 for students joining in the spring semester. Dues are paid annually, and the membership year begins August 1 and expires on July 31. In 2009-10, Texas piloted a national affiliation fee model program which allows chapters to pay an affiliation fee based on total instructional program enrollment or total enrollment for an entire school district, plus other non-enrolled members. This approach allows some programs to access other funds to make students eligible to participate in the FFA activities. The membership submission deadline for delegate counts is March 10.

Section 2 - Other FFA Membership Types

Other Membership

Requirements In addition to meeting enrollment/SAE and dues requirements, to be a Texas FFA member, a student must show an interest in the affairs of the association by attending meetings, striving for degrees of membership, participating in other organized activities of the chapter and displaying conduct consistent with the ideals and purposes of the Texas FFA Association/Texas Association of Future Farmers of America. Local chapters may adopt more stringent membership requirements. Class enrollment is required for Texas FFA administered competitive events.

Junior Membership

Junior membership, initiated in 1987, is a feature unique to Texas. Active chapters in good standing may establish junior FFA programs for students enrolled in the local chapter's school district who are in the third grade and eight years old. These students may continue their junior membership until they become eligible to enroll in the Agriculture, Food and Natural Resources program. Junior members must be affiliated with a chapter in the school district in which they are enrolled unless the school district approves a waiver for out of district students. School superintendents must approve and certify in writing out of district students to participate in the junior FFA program(s) of their district. Such waivers must be submitted annually. Junior members typically enjoy benefits provided by local chapters are eligible to compete in the state's major livestock shows and in most county shows and participate in other competitions sponsored by other FFA partners. Junior members are not eligible to participate in Texas FFA governed events or cast votes in the business of the association. Junior membership dues, rosters and waivers must be postmarked by December 1st.



Section 2 - Other FFA Membership Types

Alumni Membership

You don't have to be a former FFA member to be a member of the Texas FFA Alumni—just a supporter of agricultural education and the FFA. Those desiring to join this movement can join a local affiliate and those who wish to join but do not have a local affiliate may become an at-large member. Past state FFA officers and past state staff members may join the Texas FFA Association's PSO FFA Alumni Affiliate.

Honorary Membership

Local chapters have the opportunity to bestow honorary membership on those community members who have rendered outstanding service to the local program and to the cause of the agricultural education and FFA. At its annual convention, the state association bestows honorary membership on those who render outstanding service to the Texas FFA and Texas Agricultural Education. Each of the area associations have the opportunity to nominate for the Honorary Lone Star FFA Degree a number of worthy non-teacher recipients not to exceed ten percent of the number of regular state degrees from the previous year. The board of student officers, board of directors or executive director may also make nominations. Active teachers may receive the Honorary Lone Star Degree by meeting the criteria described in Section 40 of the Texas FFA Association Policy Handbook. All nominations must be approved by the student delegates.



Kelly White,
Texas FFA Alumni President

Section 1 - Texas FFA Effectives Chapters Doctrine

The Texas FFA Association defines leadership as "influence." The framework used to develop premier leadership among Texas FFA members is focused upon six areas: Action, Relationships, Vision, Character, Awareness, and Continuous Improvement. These focus areas and the skills and abilities associated were derived from research conducted by the National FFA Organization through joint collaboration of both business/industry partners and academia. These items were then vetted through partners of Texas Agricultural Education and were approved by the Texas FFA Board of Directors in 2009. The entire leadership development framework may be found in the appendix of this Leadership Guide. The Texas FFA's primary leadership development vehicle is the local chapter. State and area leadership development programs are geared to strengthen local chapters through which members learn to function as part of an effective team, plan and implement strategies, lead and serve on committees and fiduciary responsibility.



Section 1 - Texas FFA Effectives Chapters Doctrine

1. Strives for all agricultural education students to be FFA members because of the integral nature of FFA and Agriculture, Food and Natural Resources curricula.
2. Actively encourages and cultivates supervised agricultural experience programs that are industry relevant, appropriate to classroom and laboratory instruction, student interests, aptitudes and future goals and are documented in approved record books. Preference should be given to computer generated record keeping systems. Students are encouraged to compete for SAE-based awards and scholarships.
3. Meets or exceeds expectations listed in the National FFA Organization's "Essential of a Successful Chapter" in the Official FFA Manual. The chapter has regular meetings and follows a constitution and bylaws and policies which comply with state guidelines. The chapter has developed and approved a written program of activities which addresses all components of the National FFA Organization's quality standards for local chapters, and has as an intended outcome the engagement of 100% of its members in a hands-on leadership development experience. The chapter provides leadership training for chapter officers and other recognized leaders.
4. Provides instruction in basic leadership skills such as parliamentary procedure, speech communication, and opportunities to demonstrate skill proficiency in FFA competition.
5. Provides achievement opportunities in career development events appropriate to instruction and student interest.
6. Encourages academic excellence and pursuit of post-secondary education through promotion of and assistance in applying for FFA scholarships.
7. Provides leadership opportunities above the chapter level through active participation in district, area and state FFA activities.
8. Provides a systematic and consistent avenue for significant and public recognition of student achievement. This should include an annual awards program and a working relationship with local media.
9. Provides input opportunities for parents, industry representatives, administrators and other interested community stakeholders to review and evaluate program operations through an advisory committee which reports findings and recommendations to the board of trustees.
10. Has a well-organized adult support group which assists teachers and students in achieving chapter goals in harmony with school district policies. The local FFA chapter should also draw on the expertise of other subject area instructors to assist in meeting student and chapter goals.
11. Reaches students of all races, ethnicities and socio-economic backgrounds and develops programs that are diverse and inclusive. The chapter membership should reflect the demographic profile of the campus, and if not, the local chapter should be engaged in tactics to reach this standard.

Section 2 - Student Leadership

Chapter Officers and Committee Chairs

All local chapters should have functioning officers and committee chairs. Each of the components of the National Quality FFA Chapter Standards should be represented by an active standing committee charged with clear and measurable objectives. Leadership means exerting influence, and FFA members should learn to exercise leadership in the context of an organization.

Area and District Officers

Student officers are elected to conduct the members' business at each organizational level—district and area. These officers are expected to conduct meetings, facilitate camps and workshops and represent their respective associations. All district and area officers must hold the chapter degree at the time of their election.



Section 2 - Student Leadership

State Officers

It is a remarkable opportunity to serve as a Texas FFA State Officer! At the 96th Texas FFA Convention, 12 members were elected to work on behalf of their fellow Texas FFA members in this capacity. Areas select their candidate to advance to the state-level process. At the state level, the process consists of two phase that includes an Interview Score/Exam which makes up 60% of the process and the Delegate Vote which makes up the remaining 40%. Both the area and the state selection processes are facilitated by board-appointed adults and a team of their peers. The first phase includes an application, a knowledge exam, and an interview. Candidates then give a speech during the Annual State FFA Convention where the delegates vote on their next President and First Vice President. Officers must hold the Lone Star FFA Degree at the time of the state election held at that year's state convention and must be active members for the duration of their term in office. A candidate may be eligible to run for office through the second convention after their graduation from high school. A president and first vice president are elected from the 12 incoming officers. These two officers take a one-year leave of absence from college studies to serve as the Texas FFA's travel team, visiting three schools a day, five days a week, representing the Texas FFA and delivering motivational presentations and workshops to students, teachers, administrators and other interested parties.



Section 2 - Student Leadership

National Officers

Beginning with Roy Martin of Cotulla, who was the first Texas FFA member to serve as a National FFA Officer in 1936-37, 31 Texas members have served as a member of the six-member National FFA Officer team. Bobby Tucker of Mineola was the first of six Texans to serve as national president. Trey Elizondo of Yoakum served as a National Officer from Texas in 2016-2017. Ryan Williamson of El Campo served as the 2022-2023 Western Region Vice President for the National FFA Organization. The state candidate from Texas is determined by the Texas FFA delegates during the annual convention. The national officer nomination process is conducted in conjunction with the National FFA Convention in Indianapolis. A nine-member nominating committee interviews all candidates and nominates a president, secretary and vice presidents from each of the four national regions.

National officers dedicate one year of service with the organization. The time is spent representing student membership during meetings with the National FFA Board of Directors, facilitating workshops that bring leadership and knowledge to FFA members, delivering motivational speeches and serving as advocates for FFA on a global scale. National officer candidates must be active FFA members, must hold the American FFA Degree at the time of election, and must retain active membership through their term of office. National FFA officers shall serve from one national convention through the next succeeding national convention and shall not be re-elected, nor be eligible for election to another national office.



Ryan Williamson,
of El Campo served as the 22-23
Western Region Vice President. He
is the most recent Texas FFA
member to serve as a National
Officer.

Section 2 - Student Leadership

National Convention Delegates

Each state FFA association is allotted a number of voting delegates to the National FFA Convention based on membership. In October 2023, 69 of the 475 National Delegates were from Texas. The state's 12-member officer team serves as part of the delegation and the area associations are given the opportunity to select members to travel to the national convention to represent the interests of the state's members in conducting the National FFA Organization's business. The national delegate process starts long before the national convention. In Texas, it begins as a grassroots process through which any member has the opportunity to have an issue or idea considered at the national level. One of an area officer's first responsibilities is to gather concerns and issues regarding the National FFA Organization. These are funneled to the State Leadership Conference in June, at which time a student national issues committee examines all forwarded issues and submits a report to the Texas FFA Board of Directors and to the National FFA Organization. These issues, along with other issues forwarded by other states, are considered by the delegates attending the State Officer's Summit in Washington, D.C. Issues deemed to be most important are selected and become national delegate issues. All national delegates are assigned to issue committees which consider one of the critical issues and hold public hearings. Each committee develops recommendations which are presented to the National FFA Board of Directors.

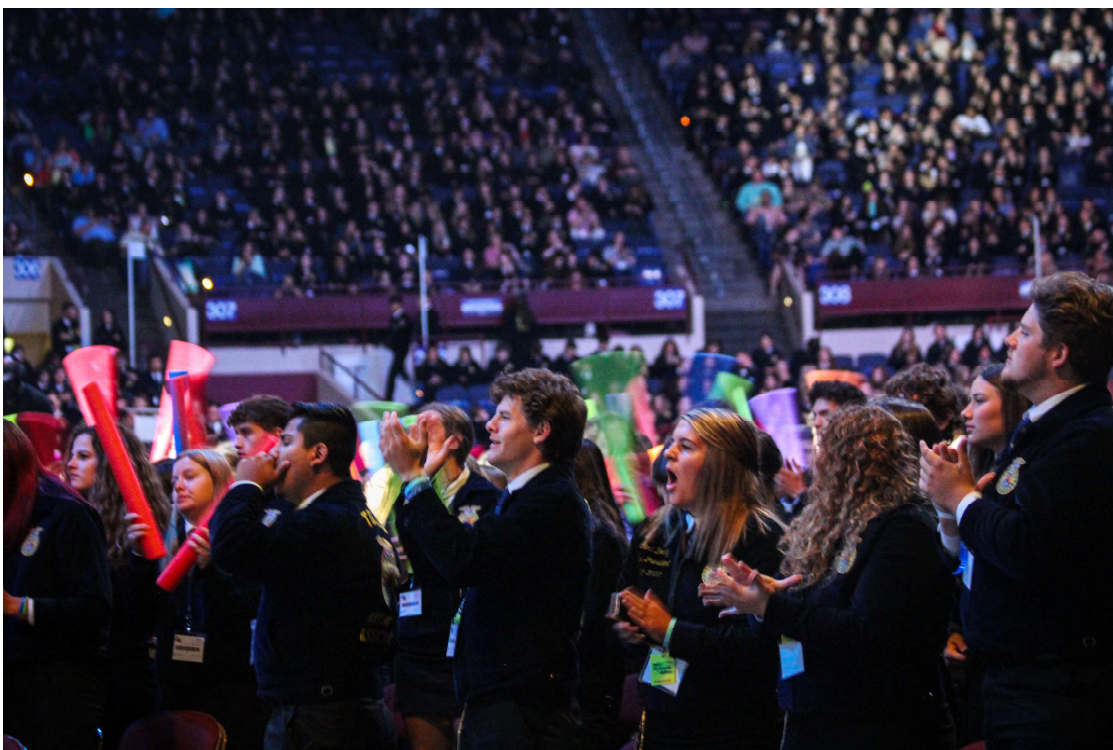


Section 2 - Student Leadership

District, Area and State Delegates

FFA values a hands-on, “learning to do, doing to learn” leadership development philosophy and strategy. Each chapter is entitled to send delegates to the state convention to cast votes in election processes and to participate in the conduct of the state association’s business. Student delegates must approve any due increases, amendments to the constitution or bylaws, regular and honorary state degrees and the state association’s nominee for national office. Delegates also approve the annual program of activities and budget.

Each local chapter is entitled to send one delegate from its active membership plus one additional delegate for 50 members or any fraction thereof above the first 50 members. To conduct business, the delegate body must achieve a quorum, which is defined as the minimum number of members who must be present to legally conduct business. For the state FFA delegation body, a majority of chapters which are registered for convention constitutes a quorum. Districts and areas should also carry on delegate business sessions. While delegate allocation plans may vary between the districts, each chapter should send delegates to be active participants.



Section 3 - Leadership Development through Camps, Conferences, Programs and Conventions

Leadership Conferences

Thousands of Texas FFA members attend chapter, district, area and state leadership conferences held across the state each year. The Texas FFA Association's approach to leadership development is "learning by doing" through peer instruction. Each year, area officers from across the state of Texas attend the State Leadership Conference held in early June. State officers organize the conference and provide the instruction with the goal of equipping area officers to conduct area camps and conferences for district and chapter officers. All of the state's 12 areas and a number of districts conduct leadership camps and conferences for chapter and/or district officers. Several districts hold chapter officer camps.

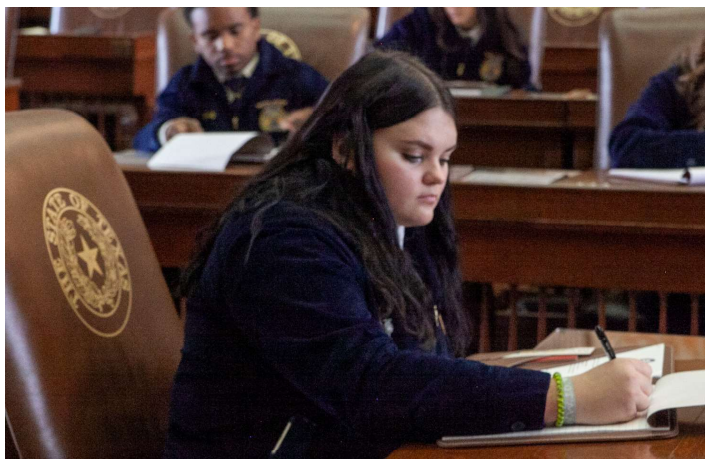
In 2013, Texas FFA adopted an overall plan titled the "Leadership Development Continuum," a long-range plan with specific leadership development outcomes for members at different stages of development. To achieve this goal, Texas FFA is developing leadership conference programs for each year of a member's FFA journey. Most greenhand-level conferences are conducted by district and area associations, but Texas FFA provides curricular support for these efforts. In 2015-16, Texas FFA piloted the sophomore-level conference called "Made for Excellence," which focuses on personal development through self-discovery of talents, strengths, interests and character to develop in members the capacity for individual achievement. In 2016-17, Texas FFA introduced "The Officership Series", a three-part series focused on more advanced aspects of leadership through service. In 2017-18, "The Officership Series" was condensed to a one-day leadership development experience for all Junior-level students. The program also received a new name, and is titled "Building Excellence". It is a junior-level conference for those who seek a more in-depth analysis of leadership concepts, principles and practices. In 2018-19 the Texas FFA launched a leadership experience for Senior-level FFA members titled "Executing with Excellence". This experience equips students to apply what they've learned in FFA to post-secondary education and the workforce. All of these one-day conferences are open to all Texas FFA members.

Career Week

In 2022, Texas FFA published Career Week on the Texas FFA Website. Texas FFA's Career Week aims to provide teachers with resources to create a valuable career unit highlighting opportunities in agriculture. Teachers will receive an easy-to-implement weeklong plan that helps students explore various agricultural careers, identify their talents, develop soft skills, and advocate for the industry

Day at the Capitol

Each year in conjunction with National FFA Week, Texas FFA designates two days in February for Texas FFA members to come to the state capitol to learn about the legislative process. Because the legislature convenes on odd-numbered years, the program alternates between a workshop-style event on interim years (when the legislature is not in session) and session years. The interim-year program features speakers who are statewide elected officials, legislators, legislative and agency staffers and professional legislative advocates. When the legislature is in session, FFA members spend time interacting with their elected senators and representatives.



Ford Leadership Scholars

In September, 2009, the Texas FFA Board of Directors approved the Ford Leadership Scholars, a partnership between Ford Motor Company, Texas FFA Foundation and Texas FFA Association. An application process begins in January and includes a reading assignment followed by a test, and a face-to-face behavioral interview. Ten members are selected by a committee of industry professionals to participate in an intense week-long leadership training that results in a partnership with a mentor and a substantial and sustainable capstone community service project.



State Convention

The state convention is the year's highlight for the Texas FFA Association. Each year, some 14,000 to 16,000 active, collegiate, and alumni members, guests and supporters convene to: recognize Texas FFA's degree, award and scholarship recipients. It is a convention where members compete for state honors in the talent competition, elect new officers, conduct the business of the state association and hear from inspiring speakers. Texas FFA members can actively participate in the convention by representing their chapter as a voting delegate, Courtesy Corps member, Texas FFA Foundation Ambassador, Texas FFA Chorus member, or joining the Convention Media Team. In addition to the events on the main stage, the convention features top entertainment acts, the Texas FFA State Rodeo, leadership development workshops, community service opportunities, Alumni FFA meetings and the Annual Texas FFA Alumni Benefit Auction. The state STAR award interviews, agriscience fair, and FFA Quiz Bowl are held in conjunction with the annual convention. State convention sites are selected by the Texas FFA Association Board of Directors, several years ahead of each convention.

In 2023, the 95th Texas FFA Convention was held in Dallas, Texas and had an attendance of 16,732 and is now recognized as the largest Texas FFA convention on record. In 2018, the Texas FFA began a six-year convention rotation between the cities of Fort Worth & Dallas: Fort Worth (2018 & 2019); Dallas (2020); Fort Worth (2021 & 2022); Dallas (2023). This was the first time to hold consecutive conventions in a single location since 1929-33 when the FFT/FFA held five successive conventions in conjunction with the State Fair of Texas in Dallas.

Another monumental year was made in 2020 when Texas FFA held the 92nd Convention virtually due to the COVID-19 pandemic. Speaking Development Events, Agriscience Fair, and all six sessions, including after-show segments, were conducted online. The Nominating Committee and all State Officer Candidates met in one single location to execute the in-person components of the officer election process. The 2020-2021 State President and First Vice President were elected by voting delegates across the state through an online election platform.



Section 1: Advanced Degrees and Awards

For the FFA member, degrees of membership represent milestones in the development of leadership, career and citizenship skills. Member and chapter awards provide worthy goals and significant recognition in a competitive environment. The Texas FFA's awards program reflects the diversity of the agricultural industry and then agriculture, food and natural resources curriculum. Tammy Glascock of the Texas FFA Association serves as general superintendent of the state award and degree selection process. A 24-member advisory committee provides input to the Board of Directors concerning policies and procedures regarding award and degree selection.

Degree of Membership and the Degree Check Process

The FFA's five-tiered degree structure includes the Discovery (beginning in 2001), Greenhand, Chapter, State, and American Degrees and is as old as the FFA itself. In 1928, four students received the state farmer degree as members of the Future Farmers of Texas: Lacy Baker and H.R. Wright of Dilley, and Robert Gardner and Leon King of Denison. Three degrees of membership are bestowed by the local chapter—the Discovery, Greenhand and Chapter Degrees. The State FFA Degree is known as the Lone Star FFA Degree in Texas. It is the highest degree of membership that can be bestowed to a student by the Texas FFA Association and is awarded annually at the state convention held in July. The American Degree is awarded by the National FFA Organization, but applicants must submit an application to the state association for approval and submission to the national level. Degrees are not competitive amongst students and the state has no limit on the number of members who may receive a degree in a given year. If a member meets the constitutional standard, they may receive the degree, provided records and degree application have been completed and submitted in compliance to all deadlines and related state policies. The process of inspecting record books and checking applications is called the degree check. The degree check process begins in each of the state's 66 districts and culminates in the state degree check held at a place designated by the state executive director with the advice and consent of the board of directors.



Tammy Glascock

serves as the general
superintendent of the Texas FFA's
award and degree selection process.

Star Awards

Members with an outstanding SAE and record of achievement and leadership have the opportunity to win star awards at each degree level (Greenhand, Chapter, Lonestar, and American). At the state level, each star award winner receives a \$1,000 Dina Wallrath Robertson Memorial Scholarship. Only American Degree level Stars advance to the national convention. State finalists and winners are recognized at the state convention. Because of the vast differences that exist between different types of SAE endeavors, star awards are divided into four divisions:

- Star Farmer (Production): entrepreneurial enterprises that are production oriented.
- Star in Agribusiness: agricultural sales and services or other non-production entrepreneurial endeavors. All entrepreneurial horticultural enterprises, such as ornamental plant production and landscaping, are classified as agribusiness even if the SAE is production oriented.
- Star in Placement: employment-based or work-based SAEs.
- Star in Agriscience: programs which are aimed at developing higher order scientific knowledge and skills. Applications in this area may be experimental, analytical or inventive.

In 2015, Texans made history with American Star Finalists in all four categories. That same year, the Pilot Point FFA Chapter became the first chapter to have two Star Finalists in the same year. These two accomplishments were a first in Texas FFA history. Star applicants must meet the degree requirements for the level at which they are applying and the criteria for the award division for which they are applying. State finalists, with the exception of American Degree level applicants, are interviewed at the state level, and in most cases, interviews are also conducted at the district and area levels. The degree application and star battery must be submitted in accordance to established district and area guidelines and to the state level in compliance to deadlines and standards established in the Texas FFA Association's Policy Handbook, Section 26: Selection Procedures for Degree Candidates, Student and Chapter Awards.

Star Chapter Awards:

As a result of the SAE For All program, chapters can now offer two or more students the opportunity to work together on a chapter SAE. Those chapters with a School - Based Learning or Service - Learning SAE may apply for the Outstanding Star School - Based/Service - Learning Award. Award applications will be submitted at the district and area levels and all area winning applications advance to the state level. The top four applications in each category will advance to the final's interviews held at the Texas FFA State Convention.

Proficiency Awards:

The National FFA Organization establishes proficiency award areas that reflect the diverse, interdisciplinary nature of the agricultural industry and the scope of possibilities for student SAEs. Proficiency award applications are submitted at the district level with winners advancing to the area level to be considered for area honors. Area winners are submitted to the state selection process and must be rated as a gold emblem application to be considered for top state honors. State winners receive a \$1,000 scholarship and are forwarded to the National FFA Organization to be reviewed for national honors.

John Justin “Standard of the West” Award:

In 1998, Justin Boot Company began a partnership with the Texas FFA Association by sponsoring the John Justin “Standard of the West” Award. The “Standard of the West” Award is designed to recognize those FFA members who exemplify the spirit of agriculture, along with its work ethic and family values. The selection criteria for the award are based upon the individual’s integrity, honesty, helpfulness, perseverance, grades and school attendance. Each area selects one John Justin “Standard of the West” Award winner who receives a product-gift certificate, a plaque, and a \$500 stipend during the Texas FFA Convention. This individual will also be highlighted in one of the six issues of the Texas FFA News magazine. The state winner will receive another product-gift certificate and plaque. He or she will also receive a \$2,500 stipend. In addition, the advisor(s) of the state winner will receive a pair of full quill ostrich boots.

Chapter Recognition:

Texas FFA Association recognizes those chapters that have outstanding programs of activities through the National Chapter Award program. Chapters apply using the national application, submitting the application at the district and area levels. Chapter applications are evaluated and ranked at the state degree and award selection process and rated as gold, silver or bronze level applicants. Gold-rated applications are forwarded to the National FFA Center in Indianapolis for national level judging. At the national level, applications are rated as three stars, two stars or one star. The nation’s top three-star chapters are considered for Premier Chapter or Models of Excellence recognition in the three POA divisions: Growing Leaders, Building Communities, Strengthening Agriculture. The Golden Horizon Award is a state-level recognition for chapters who participate in a variety of activities and programs above the chapter level. Points are earned for each activity in which the chapter engages. Chapters are divided into three divisions—single teacher departments, two – three teacher departments, and four or more teacher departments. Applications are divided into gold, silver and bronze rating categories based on scores. Gold-rated applicants are recognized at the state FFA convention.

Section 2: Agriscience Fair

Since 1998, the Texas FFA Agriscience Fair has provided students an opportunity to apply scientific methods to conduct agricultural research projects and to present their results in an abstract, research paper, display and interview at the state competition held in conjunction with the state convention in July. Students compete as individuals or as a part of a two-member team and are divided into six divisions:

- Division 1 – individual member in grades 7 and 8
- Division 2 – team of two members in grades 7 and 8
- Division 3 – individual member in grades 9 and 10
- Division 4 – team of two members in grades 9 and 10
- Division 5 – individual member in grades 11 and 12
- Division 6 – team of two members in grades 11 and 12

The agriscience fair recognizes six disciplines of research: animal systems, environmental services/natural resource systems, food products and processing systems, plant systems, power, structural, and technical systems, and social systems. Winning projects advance to the national judging in Indianapolis in July and have the opportunity to advance to the National FFA Agriscience Fair held in conjunction with the National FFA Convention in October. State winning projects in Divisions 1 and 2 receive a \$250 scholarship and Divisions 3-6 receive a \$1,000 scholarship supported by Dick Wallrath and Champion Ranch through the Texas FFA Foundation.



Dr. Candis Scallan

of Stephen F. Austin State University is
the State Superintendent for the
Agriscience Fair



Section 3: Leadership Development Events



Chase Carroll,
of Agriculture Science and Technology
Academy serves as the chair of the LDE
Advisory Committee.

Leadership Development Events focus on creating situations for members to demonstrate their abilities in public speaking, decision making, communication and their knowledge of agriculture and the FFA organization. Team and individual events are used to reinforce what is taught in Agriculture, Food and Natural Resources classrooms. The forerunner of today's LDEs was an invitational event hosted by the Vocational Agriculture Club of Sam Houston State Teachers College (now Sam Houston State University). This invitational was two events: public speaking, won by C. T. Heath of Henderson and debating, won by the Willis Chapter. These events have been held continuously by SHSU since then, with the exception of a six-year interruption created by World War II. All LDEs have elimination rounds at district and area levels that culminate in the state competition hosted by Sam Houston State University in Huntsville. District and area level competitions are calendared and coordinated by the teacher leadership at these respective levels. Chase Carroll, ag teacher at Agriculture Science and Technology Academy, chairs the LDE Advisory Committee that makes policy and rule recommendations to the Texas FFA Association Board of Directors.

- **Agricultural Advocacy:** Three to five team members create and present a five to eight-minute presentation designed to foster awareness and support of American agriculture. The target audience is established by each competing team. A five-minute question-answer period follows the presentation.
- **Agricultural Issues Forum:** Three to seven students research and analyze a current agricultural issue, create a portfolio and also develop and deliver a presentation that stresses both pros and cons of their selected agricultural issue. At the event competition, members use verbal skills and presentation abilities to defend their findings and answer judges' questions. * National Qualifying Event.
- **Agricultural Skill Demonstration:** Three to five team members perform an actual demonstration of an agricultural skill including anything in the Agriculture, Food and Natural Resources curriculum using effective public speaking and communication methods. There is both a Greenhand and senior level for this event.

Chapter 6: Getting Involved: Diversified Opportunities

- **FFA Quiz:** Teams may be comprised of three or four members at both the Greenhand and senior level. For Greenhand members, the FFA Quiz is a 100-point exam testing knowledge of the Gray's Guide to Parliamentary Procedure for FFA, the latest FFA Official Manual and the Texas FFA District Officer Candidate Study Guide. For the Senior FFA Quiz (senior level), competitors are tested on their knowledge of materials from Gray's Parliamentary Guide for FFA, the latest FFA Official Manual and information from the Texas FFA Leadership Guide, U.S. and Texas Farm Facts and current agricultural issues and events on a 150-question exam. Students compete for both individual and team honors.
- **Chapter Conducting:** Seven to 10 team members conduct a mock chapter meeting to demonstrate knowledge of basic parliamentary law and the use of correct parliamentary procedures. At the conclusion of the meeting, team members are asked questions regarding parliamentary law. There is both a greenhand and senior level for this event. * National Qualifying Event for winning senior level team.
- **Creed Speaking/Spanish Creed Speaking:** Individual participants present the FFA Creed from memory and answers questions about its meaning and purpose. This event is just one way to boost self-confidence, earn recognition, and develop powerful, organized and professional communication skills. There is both a greenhand and senior level for both events. Greenhand competitors must be in the seventh, eighth, or ninth grade. * National Qualifying Event for the greenhand division winner only.
- **FFA Broadcasting:** Three members present an informative radio program covering one or more agricultural subjects that is current in nature and local in content. The contest assumes that the chapter has a regularly scheduled non-commercial radio program once each month over a local station.
- **Job Interview:** Individual participants submit their cover letter and resume, complete a job application for an agricultural position on site and participate in an interview via telephone, in-person one-on-one with a panel of possible employers. *National Qualifying Event.
- **Public Relations:** Two to four team members develop and present a 6-9 minute program to inform a specific target audience about the Texas FFA and what it represents. Team members are asked questions in response to their program following the presentation. The specific target audience for the presentation changes each year and is identified in the event rules.



Section 4: Career Development Events



Patrick Padgett

of Fredericksburg serves as the
Chairman for the CDE Committee

Career Development Events build on what is learned in agricultural classes and encourage members to put their knowledge into practice. The events are designed to help a member prepare for a career in agriculture by testing and challenging the student's technical, leadership, interpersonal and teamwork skills as well as their knowledge of the subject matter. These events, originally called judging contests, pre-date the FFA. The first known Texas competition was a livestock judging contest was hosted in April 1920 at an event call "Smith-Hughes Day" at the Agricultural and Mechanical College of Texas (Texas A&M). Bellville won that first contest. Most Texas FFA CDEs are conducted in partnership with the Agricultural Consortium of Texas, an association of college and universities with instructional and research programs in Agriculture, Food and Natural Resources. This relationship is defined in a memorandum of understanding that is part of the Texas FFA Association's board-adopted policies. A nearly identical relationship exists with the Wildlife Alliance for Youth, the Texas FFA's provider for the Wildlife and Recreation Management CDE. A teacher committee comprised of representatives from each of the 12 areas convenes annually to review policies and procedures and to make recommendations to the Texas FFA Board of Directors. Patrick Padgett of Fredericksburg chairs the state CDE advisory committee, serving a five-year term that will expire in August of 2025. Melissa Rosenbusch of Florence was the first female CDE chairman in Texas FFA history. Because of the diverse and varied nature of the CDEs seven different sites are used to host 28 different state events: Houston Livestock Show, Sam Houston State University, Huntsville; Stephen F. Austin State University, Nacogdoches; Tarleton State University, Stephenville; Texas A&M University, College Station; and Texas Tech University, Lubbock. The site of the wildlife and recreation management event is rotated amongst the state's five biological regions.

- **Agricultural Communications:** Three team members participate in a simulated news conference, then use the information collected to complete practical problems including: writing a news story and press release, preparing a website blog and developing a graphic design. Participants also complete a written communications quiz and an editing exercise. State event location: Texas Tech University. * National Qualifying Event
- **Agricultural Technology & Mechanical Systems:** Three to four team members demonstrate their ability to work with others while solving problems. The contest is system based and emphasizes machinery and equipment systems, related industry and marketing systems, energy systems, structural systems and environmental/natural resource systems. Team members complete a written exam and demonstrate problem solving and hands-on performance skills. State event location: Sam Houston State University. * National Qualifying Event
- **Agricultural Sales:** Three to four team members prepare and present a professional sales process which incorporates customer relations skills, advertising and promotion, telephone skills and product display. The contest also includes the completion of an exam, presentation of a project summary and a sales presentation for an agricultural product. In addition, members complete one of four practical problems and cooperatively solve a market analysis problem. State event location: Sam Houston State University. * National Qualifying Event.
- **Agronomy:** Three to four team members complete a 50-question written exam; identify seeds, insects, soils and crops; demonstrate knowledge of agronomic management and solve a practical problem. State event location: Texas Tech University. National Qualifying Event.
- **Applied Agricultural Engineering:** Three to four team members individually complete a one hour, 100-point exam and complete three, 20 minute rotations that consist of hands on activities such as welding skills, cutting skills, and blue print/technical drawing interpretation/layout. State event location: Sam Houston State University.
- **Cotton:** Three to four team members individually evaluate 50 cotton samples and class each sample as to color grade and leaf grade. State event location: Texas Tech University.
- **Dairy Cattle Evaluation:** Three to four team members individually complete a written exam, evaluate dairy cattle on physical characteristics and analyze cows based on pedigree and herd record. State event location: Tarleton State University. * National Qualifying Event for the 1st place team with the 2nd place state winning team is eligible to compete at the All-American Dairy Show in Harrisburg, PA.
- **Entomology:** Three to four team members apply the fundamentals of entomology and develop skills in identifying common insects and their significance to people and agriculture. State event location: Texas Tech University.

- **Environmental and Natural Resources:** Three to four members utilize knowledge and skills related to our environment/natural resources to assess environmental issues including water analysis for contaminants including pH, temperature, dissolved oxygen, nitrates and phosphorus, identifying pollutant sources and improvement tactics, applying GPS skills in identifying longitude and latitude of a given set of points, identifying boundaries, laying out fence lines, ponds, drainage structures and other related facilities, analyzing soil structures and conditions, identifying equipment, plants, wildlife, fish, reptiles, amphibians, predators, birds and non-native species and addressing global environmental issues. State event location: Tarleton State University. * National Qualifying Event.
- **Farm Business Management:** Three to four team members apply management skills and economic principles to agriculture and agribusiness situations. In addition, team members complete a written exam and solve farm analysis problems. State event location: Sam Houston State University. * National Qualifying Event.
- **Floriculture:** Three to four team members apply classroom knowledge and skills to identify and evaluate cut flowers, house plants, flowering plants, floral designs and complete an exam that tests their knowledge of floral design, propagation as well as preparation of floral and foliage products for sale. State event location: Sam Houston State University. * National Qualifying Event.
- **Food Science and Technology:** Four team members design a new food product or re-designs an existing one using a marketing scenario, as they cover product development and presentation, along with food safety issues. Participants use their sensory skills to evaluate and solve problems while applying sound principles in a decision-making process. State event location: Texas Tech University. * National Qualifying Event.
- **Forage Evaluation:** Three to four team members apply their knowledge of various forage species to evaluate hay based on physical properties, identify species common to pastures and complete quiz that tests team members' knowledge of different aspects of forages. State event location: Sam Houston State University.
- **Forestry:** Three to four team members utilize knowledge and skills to identify both hardwood and pine species, evaluate sites for best management practices based on environmental factors, analyze plots for future production, product volume and identify plant species and their effects on timber-forage-wildlife relationships. State event location: Stephen F. Austin University Experimental Forest and the Natural Resource Conservation Service. * National Qualifying Event.

- **Homesite Evaluation:** Three to four team members utilize their knowledge and skills to predict potential problems associated with planned or existing homesites. Components of the contest include evaluation the limitation of soil for homesites, the sustainability of soils for parks, playgrounds, roads, streets, and other uses as designated. Although many of the properties are the same as judging soil for agricultural use, a different set of criteria is used. State event location: Tarleton State University. * National Qualifying Event.
- **Horse Evaluation:** Three to four team members observe and evaluate the phenotype of horses in order to rank horses based on breed characteristics and conformation. Performance classes are also evaluated within various equestrian styles. American Quarter Horse standards are used in performance classes. State event location: Texas Tech University. * National Qualifying Event.
- **Land Evaluation:** Three to four team members evaluate sites based on characteristics of the soil and observations of landscape conditions, then recommend land treatments considering factors such as soil characteristics, vegetative conditions and planned use for the site. State event location: Tarleton State University. *National Qualifying Event.
- **Livestock Evaluation:** Three to four team members evaluate market beef cattle, sheep, goats and swine for market values and desirable physical traits. Team members also evaluate and livestock for breeding purposes, using observed physical characteristics and performance data. State event location: Texas A&M University. National Qualifying Event with options for 2nd/3rd place teams to compete in the National Western competition in Denver, CO or the American Royal in Kansas City, MO.
- **Marketing Plan:** Three team members apply practical skills in the marketing process by developing and presenting a marketing plan. The plan promotes a current or proposed agricultural product, supply or service. In competition, the team presents its plan and answers judges' questions. State event location: Sam Houston State University. * National Qualifying Event'
- **Meats Evaluation:** Three to four team members demonstrate their knowledge and skills in the meat animal industry as they complete a written exam; evaluate beef carcasses for quality and yield grade; identify various meat cuts and place carcasses, wholesale and/or retail cuts. State event location: Texas A&M University. * National Qualifying Event with the 2nd place team having the option to compete at the National Western competition in Denver, CO.
- **Milk Quality:** Three to four team members demonstrate their knowledge and understanding of the production, processing, distribution, promotion, marketing and consumption of dairy products. Team members complete a written exam, evaluate milk samples, identify cheeses and distinguish real and artificial dairy foods. State event location: Tarleton State University. * National Qualifying Event.

- Nursery/Landscape: Three to four team members apply their nursery and landscaping marketing and service skills as they complete a written exam, identify various landscaping plant materials and evaluate plant materials and landscape plans. State event location: Sam Houston State University.
* National Qualifying Event.
- Poultry Evaluation: Three to four team members apply classroom knowledge to evaluate production, processing, marketing and consumption of chickens, turkeys, processed products and eggs. Participants complete a written exam, solve a management problem, evaluate poultry birds and products, as well as identify various poultry products. State event location: Texas A&M University. * National Qualifying Event.
- Range: Three to four team members apply knowledge and skills to record the degree of utilization, kind of site, range condition and the predominant decreaser, increaser, and invader plant species while also recommending range management practices. State event location: Tarleton State University. * National Qualifying Event
- Plant Identification: Three to four team members identify samples of grasses, forbs, legumes, and woody plants and for each indicate length of life, season of growth, origin, and the economic values of the species on wildlife and grazing. State event location: Texas Tech University.
- Tractor Technician: Three team members participate in a three - part evaluation to appraise components and parts of tractors and agricultural implements and make recommendations for services needed and not needed, complete a written exam and finally compete in locating and correcting five deliberately placed malfunctions in diesel fueled tractors and safely navigate the repaired tractor through a driving course. State event location: Houston Livestock Show and Rodeo.
- Veterinary Science: Three to four team members utilize classroom knowledge and practicums to demonstrate the practical skills utilized in the field of veterinary science. Participants will demonstrate technical competency with small and large animals. State Event Location: Texas A&M University. * National Qualifying Event.
- Wildlife and Recreation Management: Three to four team members apply the information gained through enrollment in the Agriculture, Food and Natural Resources wildlife management course to demonstrate and identify plant species, proper habitat management practices, safety procedures, game laws, management techniques as well as compass and pacing skills. Event site is rotated amongst the five biological regions of the state.
- Wool: Three to four team members evaluate fleeces for fineness, length and yield, rank fleeces within a group and give reasons for their placing of those classes. Contestants must be very familiar with all grading standards and evaluation techniques because no measuring devices are to be used during the contest. State event location: Texas Tech University.

Section 5: Speaking Development Events



Maggie Salem

of Texas A&M University
Commerce, serves as the SDE
Chairman

Speaking Development Events are designed to develop the ability of all FFA members to express themselves on a given subject. Students are encouraged to develop their communication skills and learn to formulate their remarks for presentation in a variety of situations. The first official FFA speaking contest was hosted by Texas A&M University on April 20, 1931, with 12 contestants. Smith Reed of Holland won that first competition with his speech entitled, "Farm Machinery and the Agricultural Revolution."



- **Extemporaneous Public Speaking:** Members learn how to think on their feet and make a case quickly and persuasively. Contestants are given 30 minutes to prepare a speech on one of three randomly selected agricultural topics. After delivering the speech, contestants are asked questions about their speech and topic. State winner advances to National competition that is held during the National FFA Convention the end of October. Dr. Joseph T. Robertson of West Texas A&M University chairs this event.
- **Senior Prepared Public Speaking:** Each contestant writes and delivers a six to eight-minute speech about a current agricultural subject of their choice. Contestants enter in one of six subject divisions based on speech content: animal science, plant science, natural resources, agribusiness, agricultural policy and agriculture technology & communications. Participants are then scored based on the written speech, speech delivery and their answers to judges' questions. Participants advance from district to area to state in their respective division. Six division champions are chosen in the semifinal round at the state FFA convention in July and an overall champion is selected in the final round. The overall state winner advances to national competition that is held during the National FFA Convention in late October. Dr. Leslie Vann chairs this event.
- **Junior Prepared Public Speaking:** Each contestant writes and delivers a five to eight-minute speech about a current agricultural subject of their choice. Participants are evaluated and scored based on the written speech, speech delivery and their answers to judges' questions. Participants must be in 7th, 8th or 9th grade. Dr. Chris Haynes of Tarleton State University chairs this event.
- **Soil Stewardship Prepared Public Speaking:** Contestants write and deliver a six to eight-minute speech in accordance with the year's theme selected by the Texas State Soil and Water Conservation Board. Prior to competition the speech must be presented to the local chapter and to at least one civic or school group if competing above the district level. Themes and other materials are made available through the Texas FFA Association's website. The state winner receives a \$3,000 scholarship, the runner up wins a \$2,000 scholarship and the third-place winner receives a \$1,000 scholarship. All scholarships are sponsored by the Association of Texas Soil and Water Conservation Districts. Molly Christensen of the Texas State Soil and Water Conservation Board chairs this event.

Section 6: Texas FFA Scholarship Program



Stephen Scitern
of Anson serves as the
Chairman of the State
Scholarship Committee

One of the Texas FFA Association's strategic priorities is academic excellence and College and Career Readiness. One of the fulfillments of this priority is the availability of scholarships for students to pursue advanced studies at colleges, universities and technical schools following high school graduation. The Texas FFA Association awards two types of scholarships—academic and award.

Academic Scholarships:

Texas FFA Association is blessed with partners who underwrite nearly \$2 million in scholarships through the Texas FFA Association's academic scholarship program. The purpose of the Texas FFA College Scholarship Program is to provide financial assistance to the most capable and deserving FFA members from each area of the state wishing to pursue a bachelor's degree from a Texas college or university. Scholarship recipients must pursue a degree plan which meets the criteria of their scholarship award. Candidates are selected on a competitive basis applying the following criteria: unweighted grade average, SAT or ACT scores, Agriculture, Food and Natural Resources and related instruction, LDE, CDE and other FFA participation, FFA leadership, SAE, financial need and interview performance.

Academic Scholarship Selection Preliminary Rounds:

Each area conducts an elimination process, and each area is allowed to submit a specific number of state qualifiers which is decided by the board of directors each year. A scholarship evaluation committee selects scholarship finalists from this pool of state qualifiers. Finalists are interviewed at the state scholarship selection meeting held in conjunction with the award and degree selection conference in early June.

Academic Scholarship Program Eligibility:

To be eligible to apply for a Texas FFA College Scholarship, an applicant must:

- Be an active member of the Texas FFA Association for the current year and at least two of the three previous years, be listed on the State FFA Roster, and be in good standing with the Texas FFA Association.
- Be a U.S. citizen. If the applicant's transcript reflects a place of birth other than the United States, proof of naturalization must be shown to a high school records official (principal, counselor, registrar, etc.) or the agricultural science teacher, who will then verify it as part of the application.
- Be a current year graduating senior.
- Declare intent to attend a Texas college or university in the fall semester of the application year.
- Upon graduation, have completed at least three (3) academic calendar years and at least five (5) different semesters of Agriculture, Food and Natural Resources instruction during grades 9 through 12. Course credits received through Credit by Examination shall not count towards satisfying the five (5) different semesters of instruction. All AFNR courses taken in one semester shall be counted as one semester of instruction.
- Score at least 1000 on the SAT or at least nineteen 19 on the ACT.
- Be in the top 50% of his/her class, based on scholastic rank, for the first three and one-half (3.5) years of high school for all scholarships, except the Houston Livestock Show and Rodeo and Wallrath Educational Foundation which require that the student be in the top 25% and Rodeo Austin, which requires that the student be in the top 15%.
- Be present in Official FFA Dress (according to Texas Standards) at all scholarship interviews (district, area, and state).
- Submit the most current Texas FFA scholarship application.
- All scholarship recipients MUST BE PRESENT in Official FFA Dress (according to Texas Standards) at the State FFA Convention scholarship sponsors' dinner and the awards ceremony in order to receive an FFA scholarship.

Award Scholarships:

Award scholarships are given in connection with one of the FFA's recognition programs. Scholarship recipients are identified through the selection process of that particular awards program. Currently scholarships are awarded through the following recognition programs: agriscience fair, CDEs, LDEs, proficiency awards, star awards, speaking development events and the Texas FFA Rodeo.

Ryan Mott Memorial Scholarship:

This scholarship is an academic/leadership scholarship selected outside of the regular academic scholarship program and memorializes Ryan Mott, 1997-98 State Vice President from Area IV, and the Quanah FFA chapter, who passed away shortly after his term of officer following a valiant battle with cancer. Applicants complete a separate application, and each area select one finalist to interview at the state degree, award and scholarship selection process. The winner receives a \$1,000 scholarship administered by the Texas FFA Foundation. A member may not be a finalist for the Ryan Mott Memorial Scholarship and for the regular academic scholarship program.



TEXAS FFA STATE PRESIDENTS

Howard Strother, Mount Pleasant 1929-30
Miller Rhoades, Taylor 1930-31
Odell Nevis, Abilene 1931-32
Pat Stout, Stockdale 1932-33
R.J. Stuteville, Gustine 1933-34
Herbert Mills, Sterling City 1934-35
Tyson Barnes, Kemp 1935-36
Joe Roper, Lufkin 1936-37
Oscar Dodson, Chillicothe 1937-38
O.A. Lowe, Livingston 1938-39
Haskell Lindley, Mount Vernon 1939-40
C.G. Scruggs, McGregor 1940-41
Ray Herman, Caldwell 1941-42
Dixon Manly, Cotulla 1942-43
Nolan Haught, Iredell 1943-44
Keeseey Kimbell, Alpine 1944-45
Gerald Sauls, Richardson 1945-46
James Hancock, Timpson 1946-47
Clois Dean Wiseman, Sudan 1947-48
Jimmy Darling, Abilene 1948-49
Kenneth Gregg, Plainview 1949-50
Weldon Mason, Meadow 1950-51
Franklin Brandt, La Grange 1951-52
Joe Dan Boyd, Winnsboro 1952-53
John Hagler, La Grange 1953-54
David Risinger, Ferris 1954-55
Royce Bodiford, Millsap 1955-56
Kenton Harvey, Azle 1956-57
Billy Penn, Lufkin-Hudson 1957-58
Billy McDowell, Whitewright 1958-59
James B. Prewitt, Kirbyville 1959-60
Joe Dan Penn, Lufkin-Hudson 1960-61
James Morris, Anahuac 1961-62
Jerry Clark, Buna 1962-63
Benny G. Mays, Sulphur Springs 1963-64
Calvin Brints, Crosbyton 1964-65
Kenneth E. Graeber, Brenham 1965-66
Marcus Hill, Sulphur Springs 1966-67
Danny Burns, Pittsburg 1967-68
Bill Sarpalius, Boys Ranch 1968-69
Murray Edwards, Clyde 1969-70
Barham Fulmer, Nacogdoches 1970-71
Alan Jones, Longview 1971-72
Frederick McClure, San Augustine 1972-73
Bobby Tucker, Mineola 1973-74
Doug Leggett, Wall 1974-75
Mark Ellison, Rosebud-Lott 1975-76
Ken Johnson, Nacogdoches 1976-77
Elvin Caraway, Spur 1977-78
Mark Baker, Arlington 1978-79

Davis Alders, Nacogdoches 1979-80
John Ragland, Brenham 1980-81
Rafe Forman, Idalou 1981-82
Randy Brady, Humble 1982-83
Brad Bass, Mount Vernon 1983-84
Coby Shorter III, Rice Consolidated 1984-85
Aaron Alejandro, Boys Ranch 1985-86
Bruce Cobb, Lubbock-Cooper 1986-87
Toby Miller, Whitharal 1987-88
Donnell Brown, Thockmorton 1988-89
Jeff Rash, Gilmer 1989-90
Matt Owen, Florence 1990-91
Erica Clark, Mansfield 1991-92
Curtis Childers, Glen Rose 1992-93
Scot Pollok, Falls City 1993-94
Jason Johnson, Mount Pleasant 1994-95
Corey Rosenbusch, Glen Rose 1995-96
Tanessa Saathoff, Devine 1996-97
Bubba Shipley, Fairfield 1997-98
Brandon Hill, Arlington-Martin 1998-99
Adam Byrd, Union Grove 1999-00
Dustin Kinder, Livingston 2000-01
Kurtis Thomas, Pasadena 2001-02
Lindsay Allen, Alvin 2002-03
Tobin Redwine, Lazbuddie 2003-04
Brandi Christie, Huntsville 2004-05
Logan West, Snyder 2005-06
Tyler Treptow, Weimar 2006-07
Justin Self, Troy 2007-08
Matthew Barnes, Alto 2008-09
Allison Grainger, Brenham 2009-10
Mason Parish, Caney Creek 2010-11
Peyton Gilbert, Whitehouse 2011-12
Blake Vineyard, Roosevelt 2012-13
Ryan Cox, Mt. Pleasant 2013-14
Gracie Hedrick, Groesbeck 2014-15
Jason Edmondson, Burnet 2015-16
Jacob Traylor, Gilmer 2016-17
Cody McQueen, Fairfield 2017-18
Cory Sinkule, Penelope 2018-19
Carlye Winfrey, Seminole 2019-20
Blake Mills, Center Point 2020-21
Ember Reyes, James Madison 2021-22
Windsor Godfrey, Bryson 2022-23
Isaac Hawkins Jr., Wichita Falls 2023-24
Hunter Lawson, Paradise 2024-25

NATIONAL OFFICERS FROM TEXAS

1. Roy Martin, Vice President 1936-37
2. James Gunter, Vice President 1940-41
3. Marion Baumgardner, Vice President 1945-46
4. Wilbur Ray Dunk, Vice President 1947-48
5. Alton Brazell, Vice President 1948-49
6. Royce Bodiford, Vice President 1957-58
7. Teddy Ray Carruth, Vice President 1960-61
8. James Prewitt, Vice President 1961-62
9. Lowell Catlett, Vice President 1968-69
10. Dennis Pharris, Vice President 1969-70
11. Frederick McClure, Secretary 1973-74
12. Bobby Tucker, President 1975-76
13. Ken Johnson, President 1977-78
14. Elvin Caraway, Vice President 1978-79
15. David Alders, Vice President 1980-81
16. Brad Bass, Vice President 1984-85
17. Coby Shorter, Secretary 1985-86
18. Donnell Brown, President 1989-90
19. Lesa Ann King, Vice President 1990-91
20. Dennis Degner, Vice President 1992-93
21. Curtis Childers, President 1993-94
22. Andy McCall, Vice President 1995-96
23. Corey Rosenbusch, President 1996-97
24. Cody Nash, Vice President 1997-98
25. Trent McKnight, President 2000-01
26. Dustin Clark, Vice President 2002-03
27. Casey Hogan, Vice President 2003-04
28. Riley Branch, Vice President 2008-09
29. Randa Braune, Vice President 2009-10
30. Trey Elizondo, Vice President 2016-17
31. Ryan Williamson, Vice President 2022-23

Texas Education Code 29.182 – State Plan for Career and Technology Education

(a) The agency shall prepare and biennially update a state plan for career and technology education that sets forth objectives for career and technology education for the next biennium and longterm goals for the following five years

(b) The state plan must include procedures designed to ensure that:

- 1.all secondary and postsecondary students have the opportunity to participate in career and technology education programs;
- 2.the state complies with requirements for supplemental federal career and technology education funding; and
- 3.career and technology education is established as a part of the total educational system of this state and constitutes an option for student learning that provides a rigorous course of student consistent with the required curriculum under Section 28.002 and under which a student may receive specific education in a career and technology program that:
 - a.incorporates competencies leading to academic and technical skill attainment;
 - b.leads to:
 - i.an industry-recognized license, credential, or certificate; or
 - ii.at the postsecondary level, an associate or baccalaureate degree;
 - c.includes opportunities for students to earn college credit for coursework; and
 - d.includes, as an integral part of the program, participation by students and teachers in activities of career and technical student organizations supported by the agency and the State Board of Education.

Career and Technical Student Organizations currently supported by the Texas Education Agency and State Board of Education:

- Business Professionals of America (BPA)
- Texas DECA
- Future Business Leaders of America (FBLA)
- Family, Career and Community Leaders of America (FCCLA)
- Health Occupations Students of America (HOSA)
- SkillsUSA
- Texas Association of Future Educators (TAFE)
- Texas FFA Association
- Texas Technology Students Association (TSTA)